

**Newfoundland Power Inc.**  
**Organization Chart**

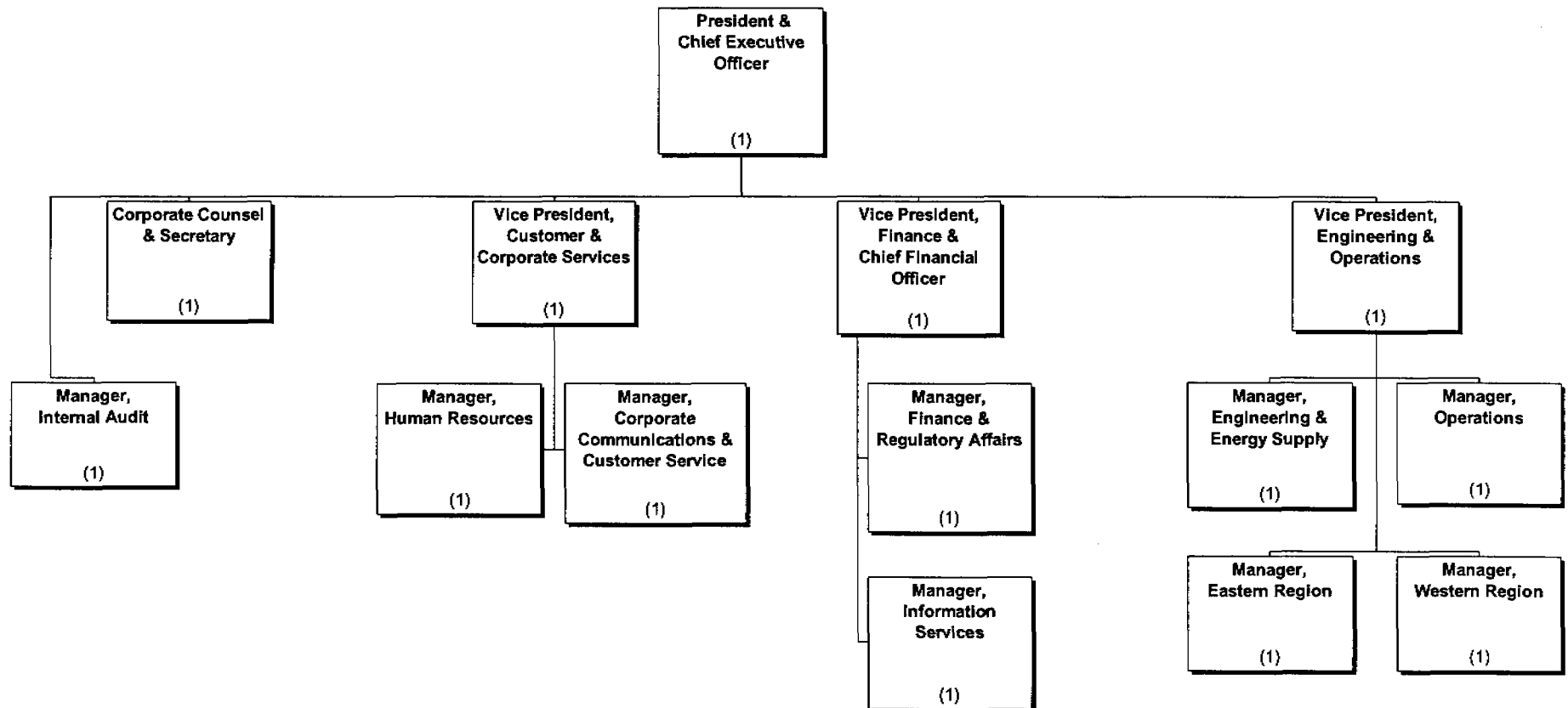
**January, 2003**

# Newfoundland Power Inc.

## Organization Chart

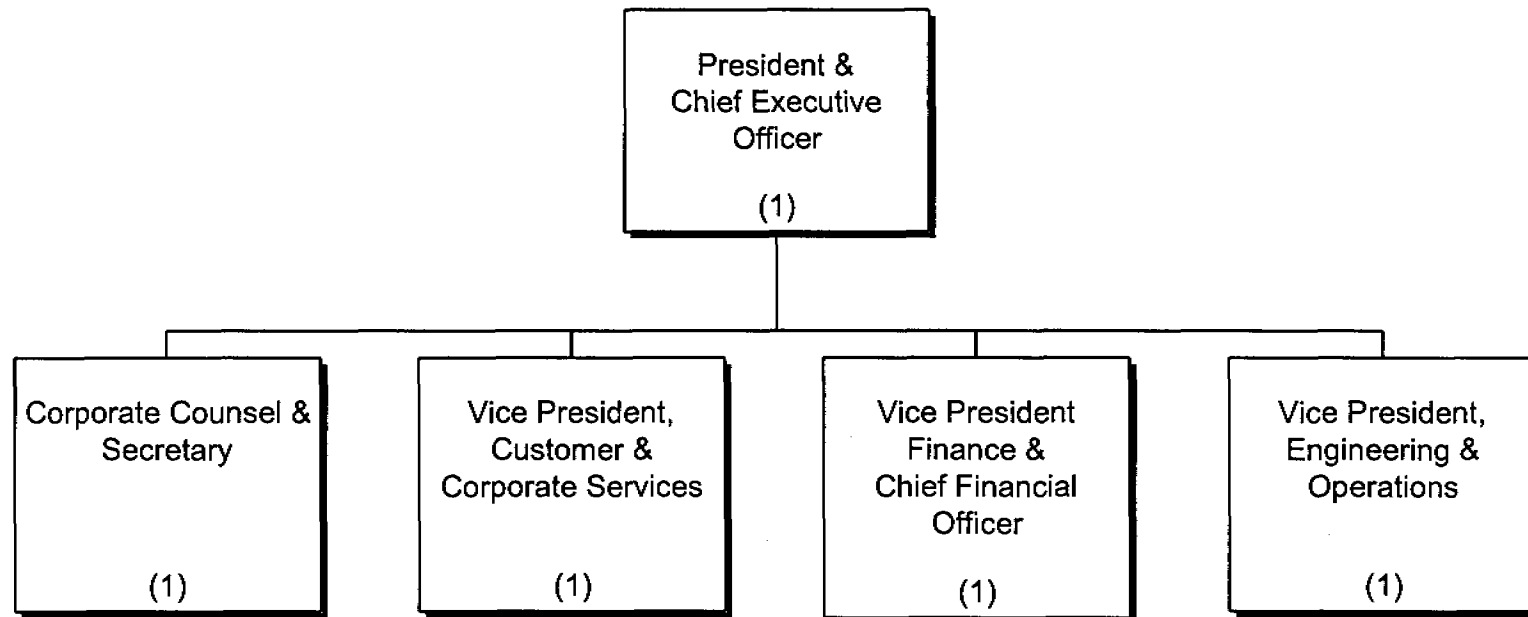
# Newfoundland Power Inc.

## Corporate Organization - 2003



# Newfoundland Power Inc.

## Executive Group



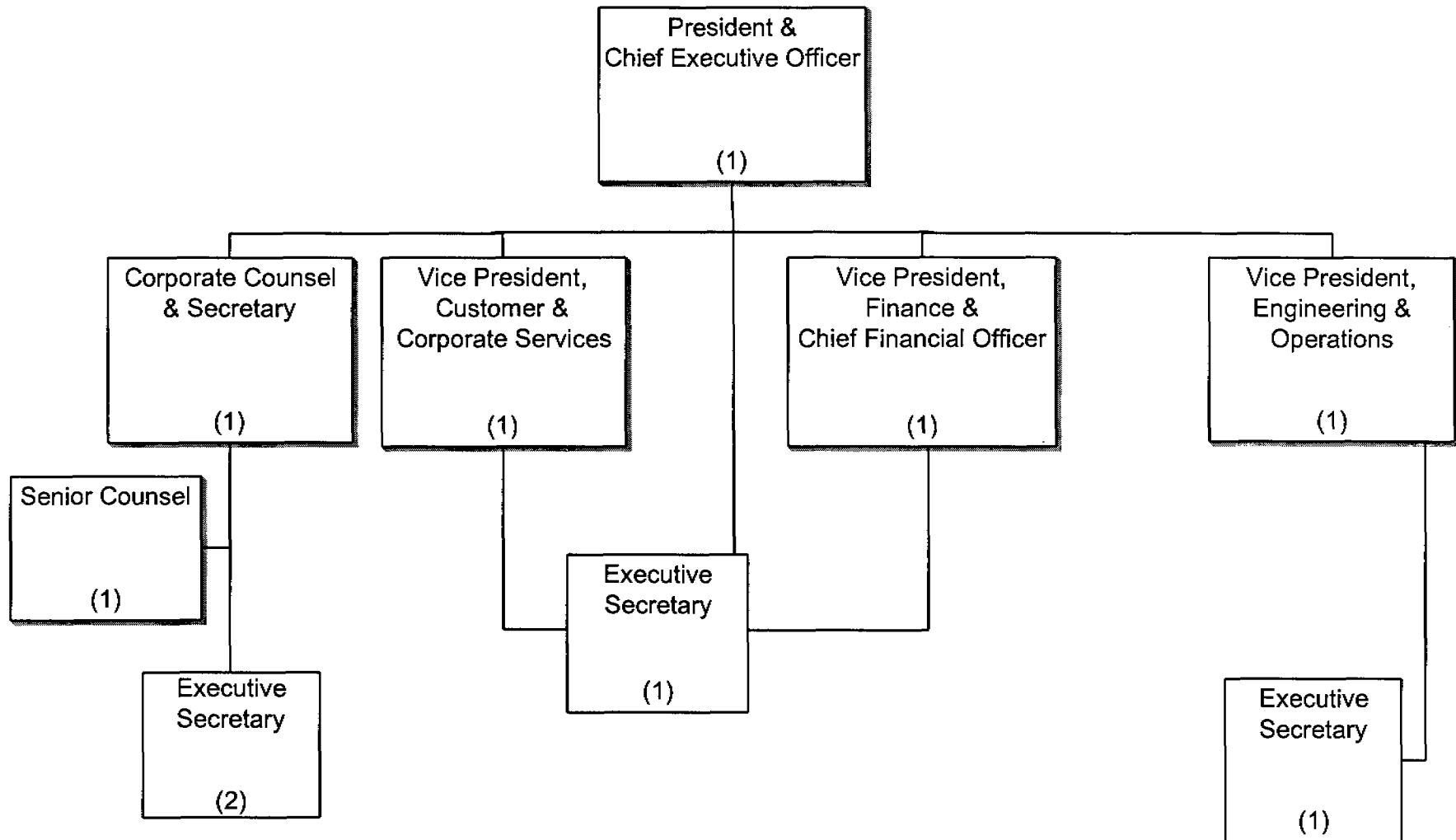
# **Newfoundland Power Inc.**

## **Section 1**

### **Corporate Offices**

# Newfoundland Power Inc.

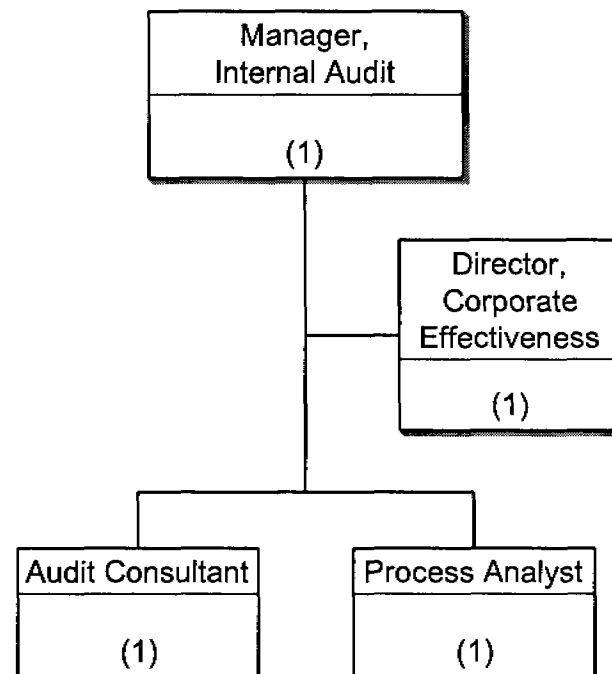
## Corporate Offices



# Newfoundland Power Inc.

## Corporate Offices

### Internal Audit & Corporate Effectiveness



# Newfoundland Power Inc.

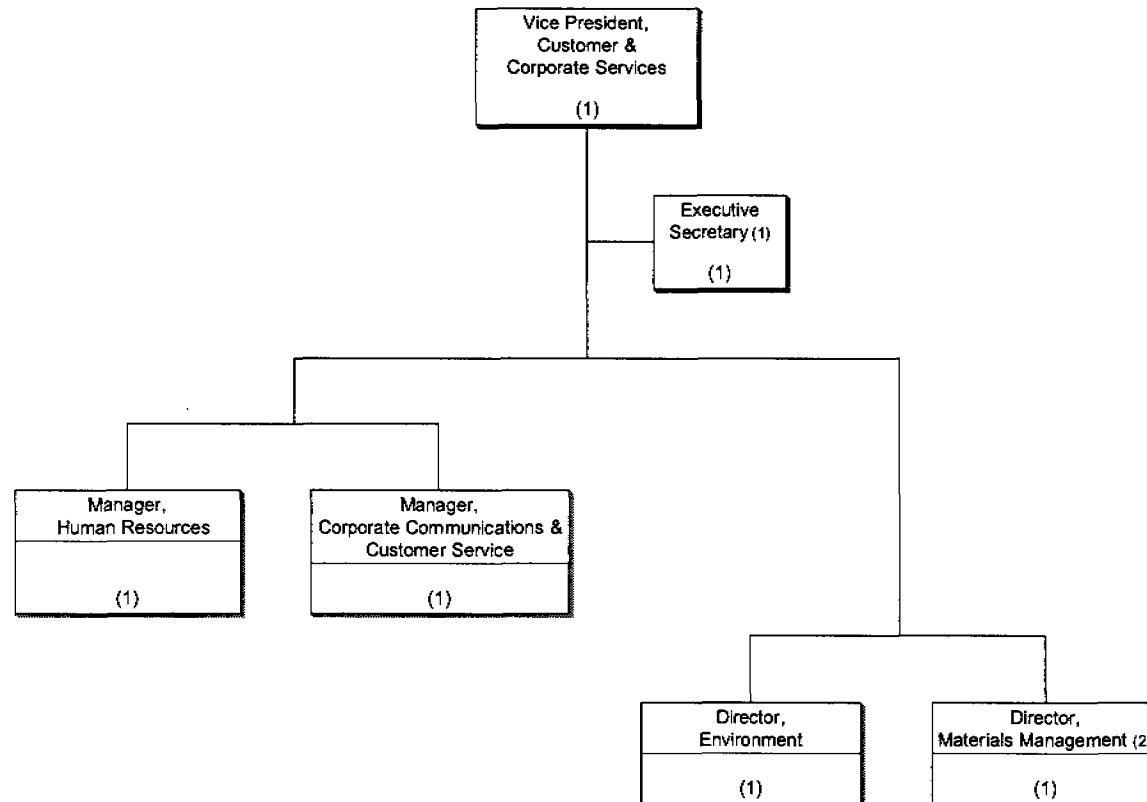
## Section 2

### Customer & Corporate Services



# Newfoundland Power Inc.

## Customer & Corporate Services



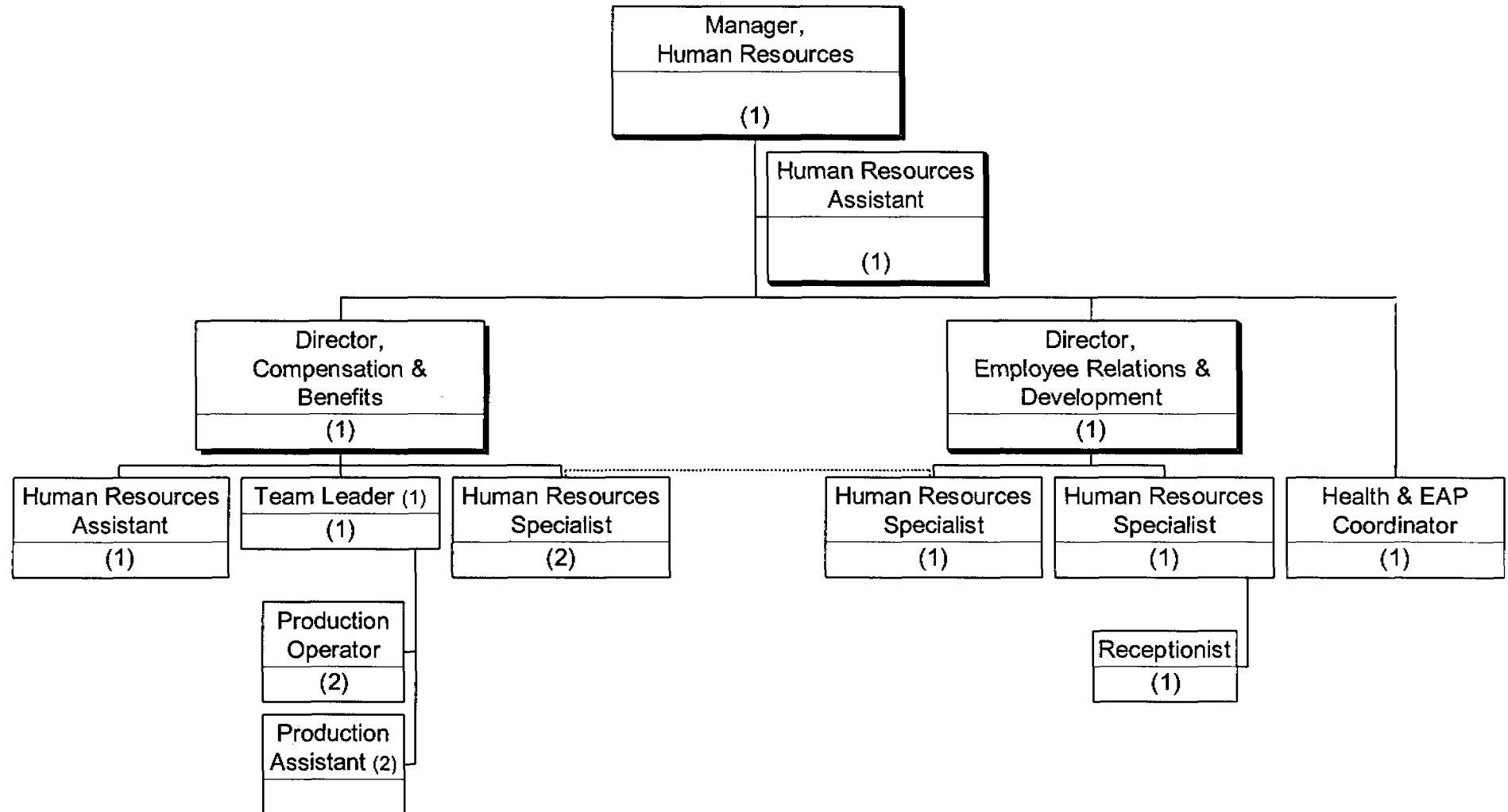
(1) Also reporting to V.P. Finance & CFO and President & CEO.

(2) Reporting directly to Vice President, Customer & Corporate Services on an interim basis.

# Newfoundland Power Inc.

## Customer & Corporate Services

### Human Resources



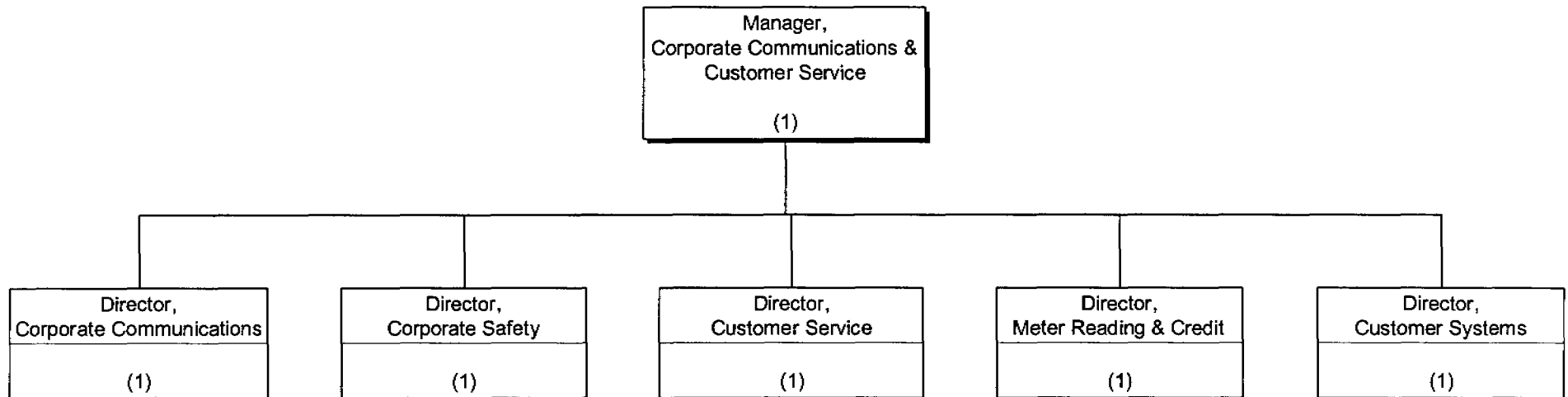
(1) Dual reporting relationship. Reports to Manager, Corporate Communications & Customer Service on Customer Service matters.

(2) Employee temporarily assigned to Materials Management.

# Newfoundland Power Inc.

## Customer & Corporate Services

### Corporate Communications & Customer Service

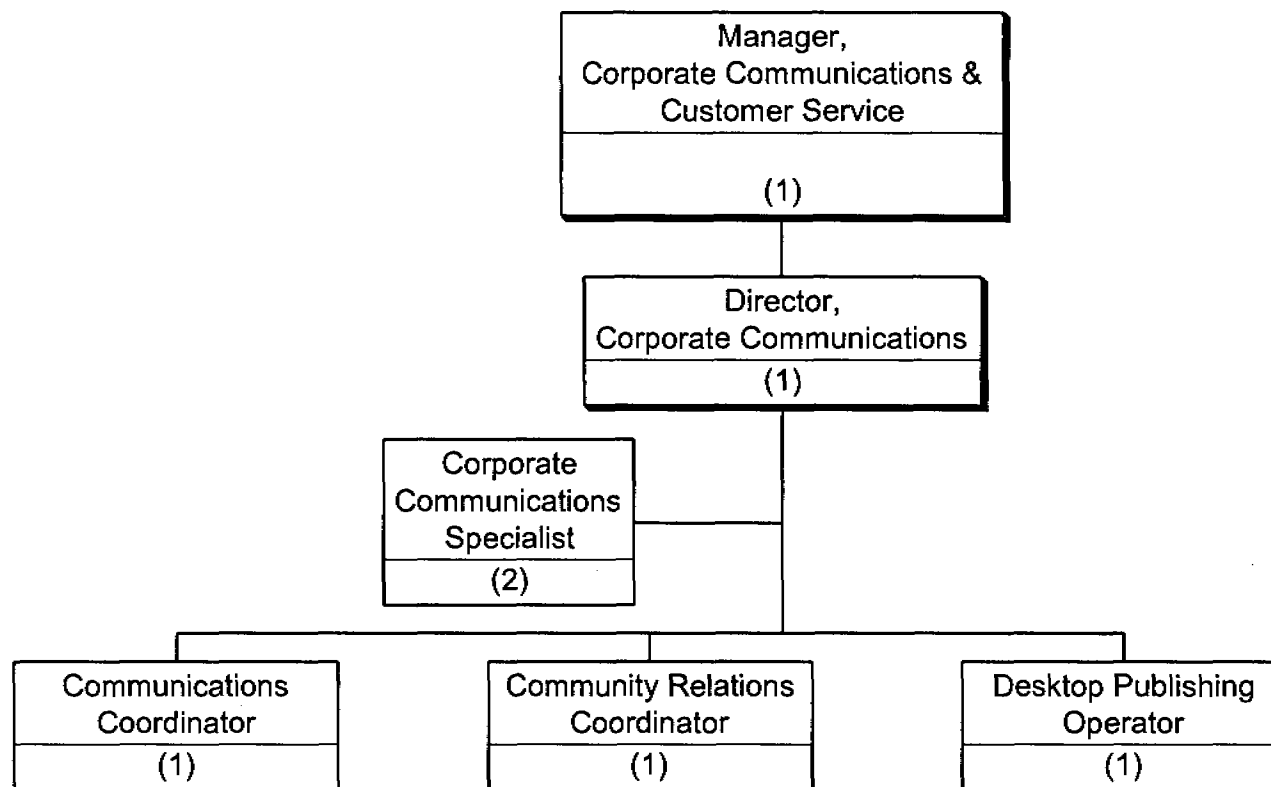


# Newfoundland Power Inc.

## Customer & Corporate Services

### Corporate Communications & Customer Service

#### Corporate Communications

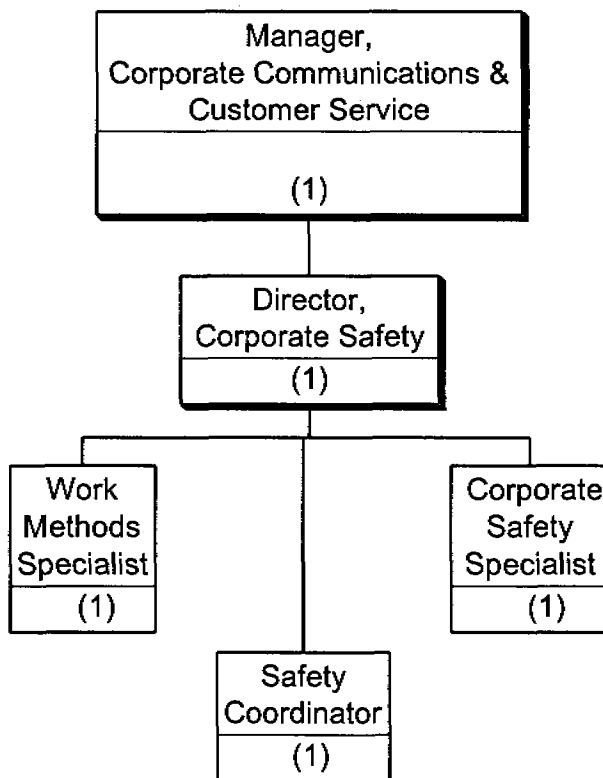


# Newfoundland Power Inc.

## Customer & Corporate Services

### Corporate Communications & Customer Service

#### Safety

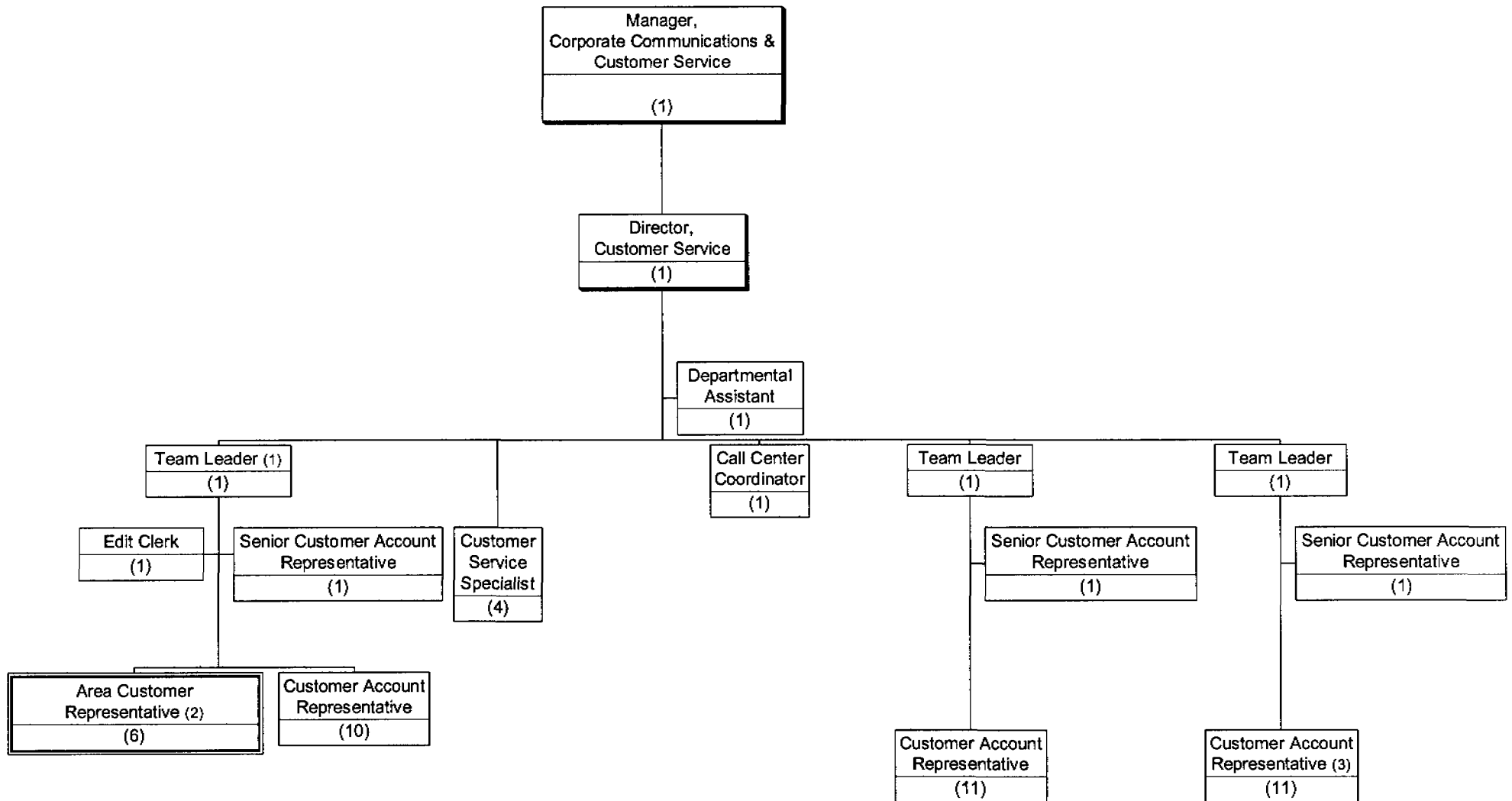


# Newfoundland Power Inc.

## Customer & Corporate Services

### Corporate Communications & Customer Service

#### Customer Service (Page 1 of 2)



(1) Dual reporting relationship. Reports to Human Resources on Production Centre matters.

(2) Dual reporting relationship with Regions.

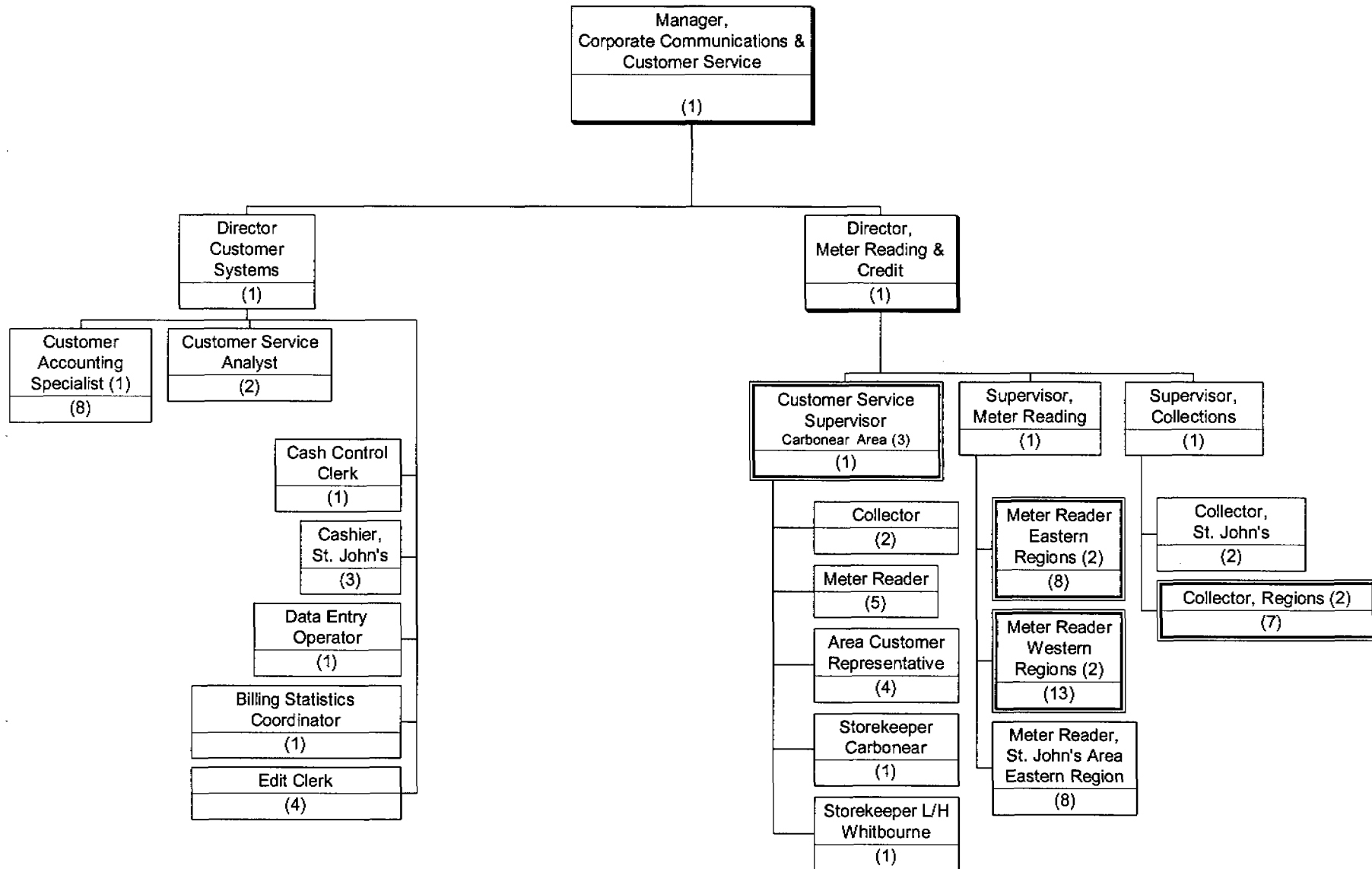
(3) One employee temporarily assigned to Information Services.

# Newfoundland Power Inc.

## Customer & Corporate Services

### Corporate Communications & Customer Service

#### Customer Service (Page 2 of 2)



(1) One employee temporarily assigned to Finance & one from Eastern.

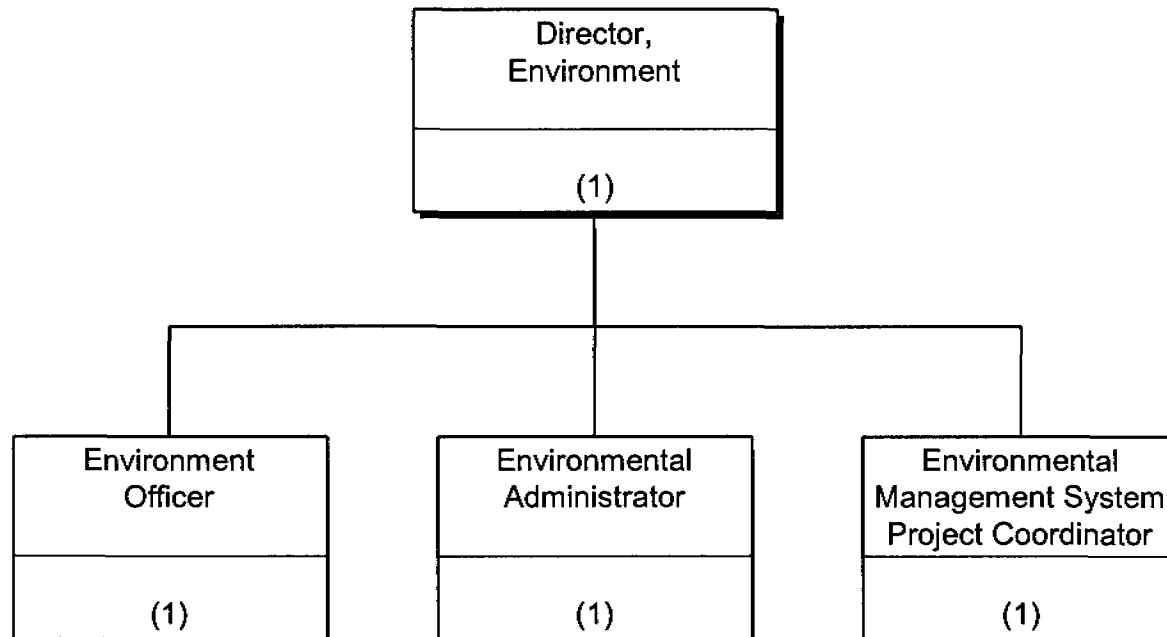
(2) Dual reporting relationship with Regions.

(3) Dual reporting relationship with Area Operations (St. John's).

# Newfoundland Power Inc.

## Customer & Corporate Services

### Environment

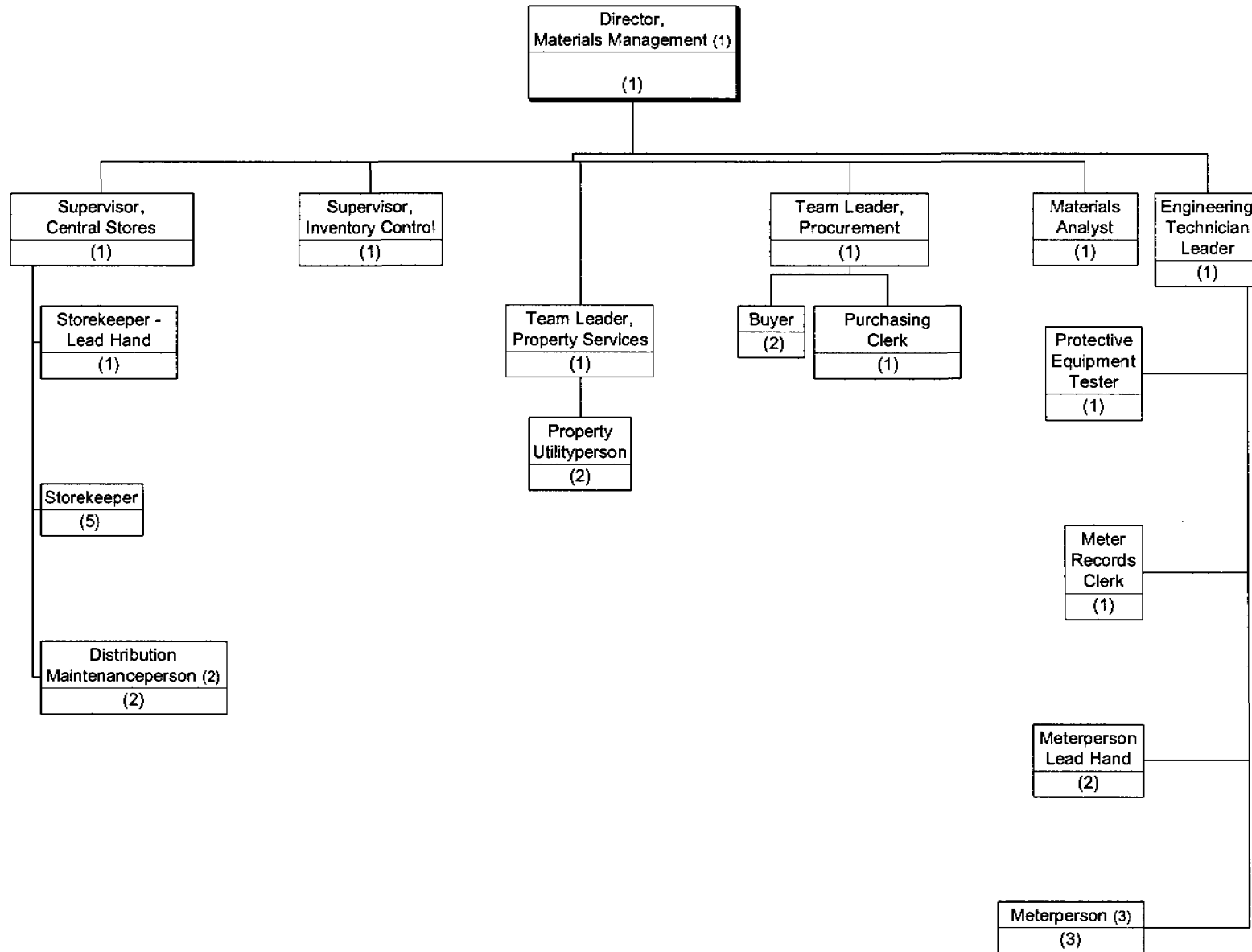




# Newfoundland Power Inc.

## Customer & Corporate Services

### Materials Management



- (1) Reporting directly to Vice President, Customer & Corporate Services on an interim basis.  
 (2) One employee temporarily assigned from Human Resources.  
 (3) One employee temporarily assigned from Information Services.

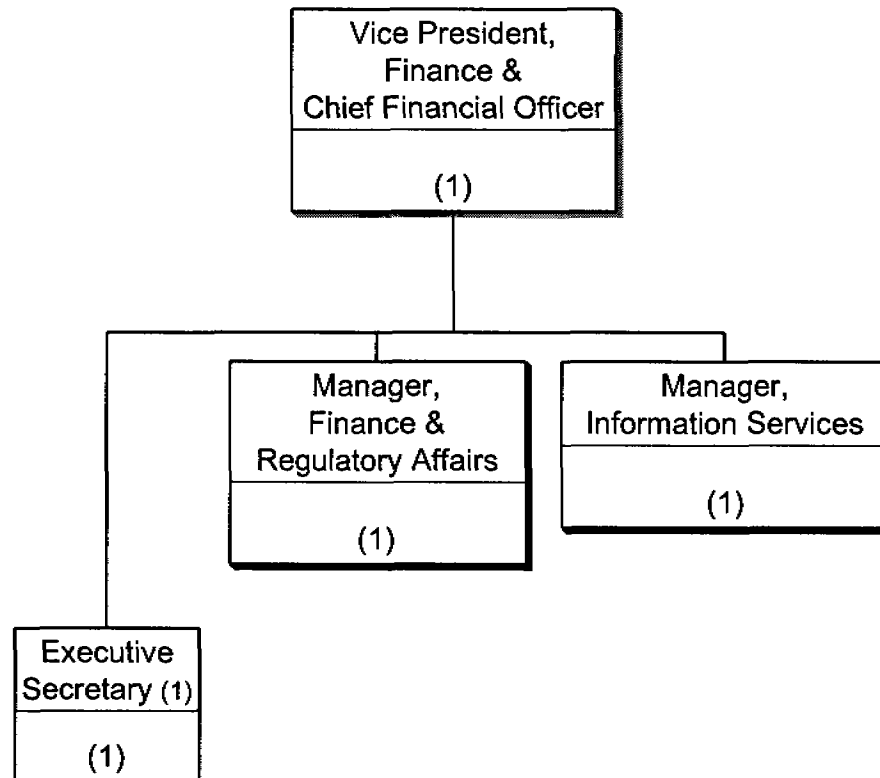
# Newfoundland Power Inc.

## Section 3

### Finance

# Newfoundland Power Inc.

## Finance



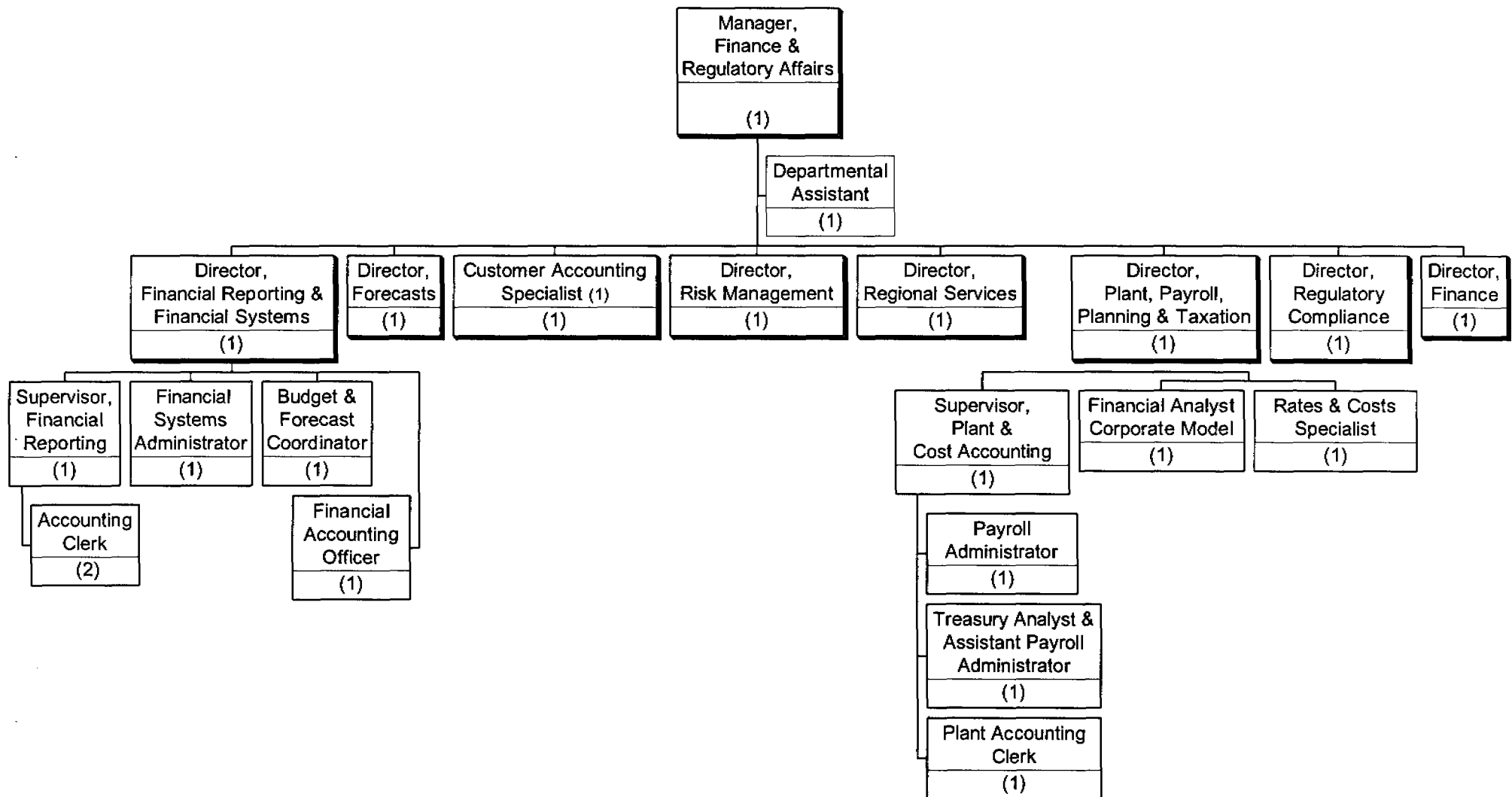
(1) Also reporting to V.P. Customer & Corporate Services and President & CEO.

January 2003

# Newfoundland Power Inc.

## Finance

### Finance & Regulatory Affairs Department

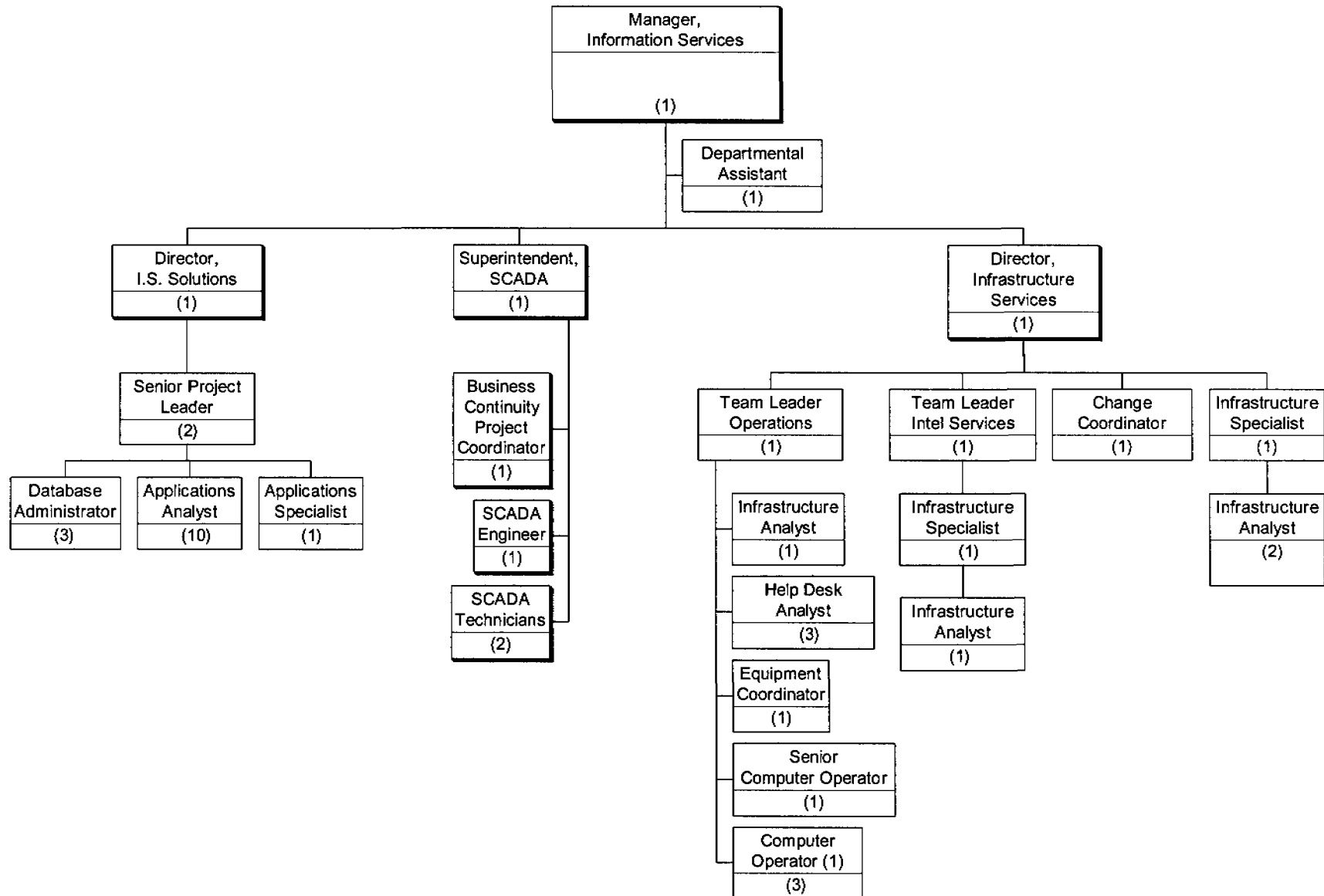


(1) Temporarily assigned from Customer Service.

# Newfoundland Power Inc.

## Finance

### Information Services



(1) Employee's temporarily assigned from Human Resources, Eastern Region & Customer Service.

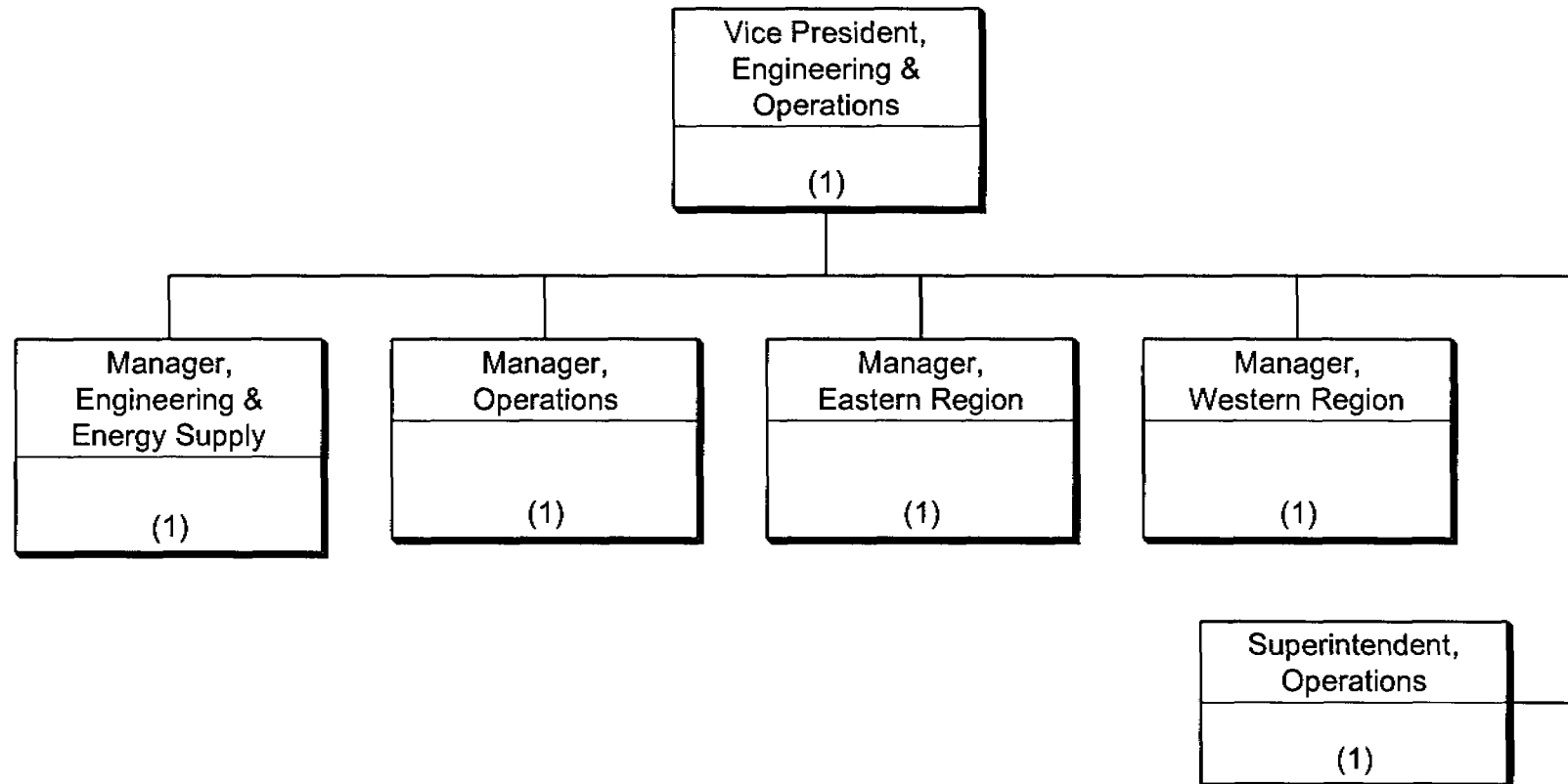
# **Newfoundland Power Inc.**

## **Section 4**

### **Engineering & Operations**

# Newfoundland Power Inc.

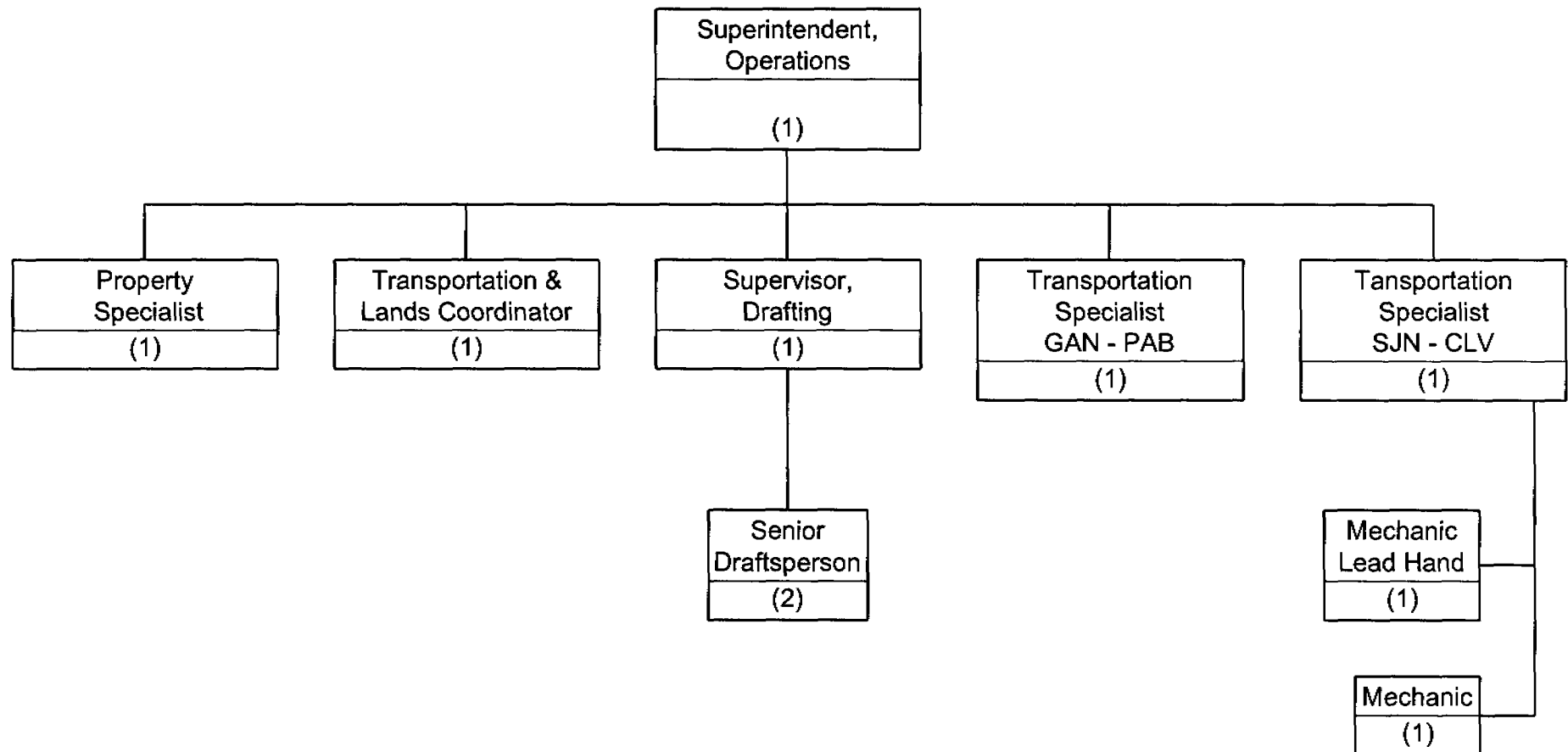
## Engineering & Operations



# Newfoundland Power Inc.

## Engineering & Operations

### Transportation & Lands

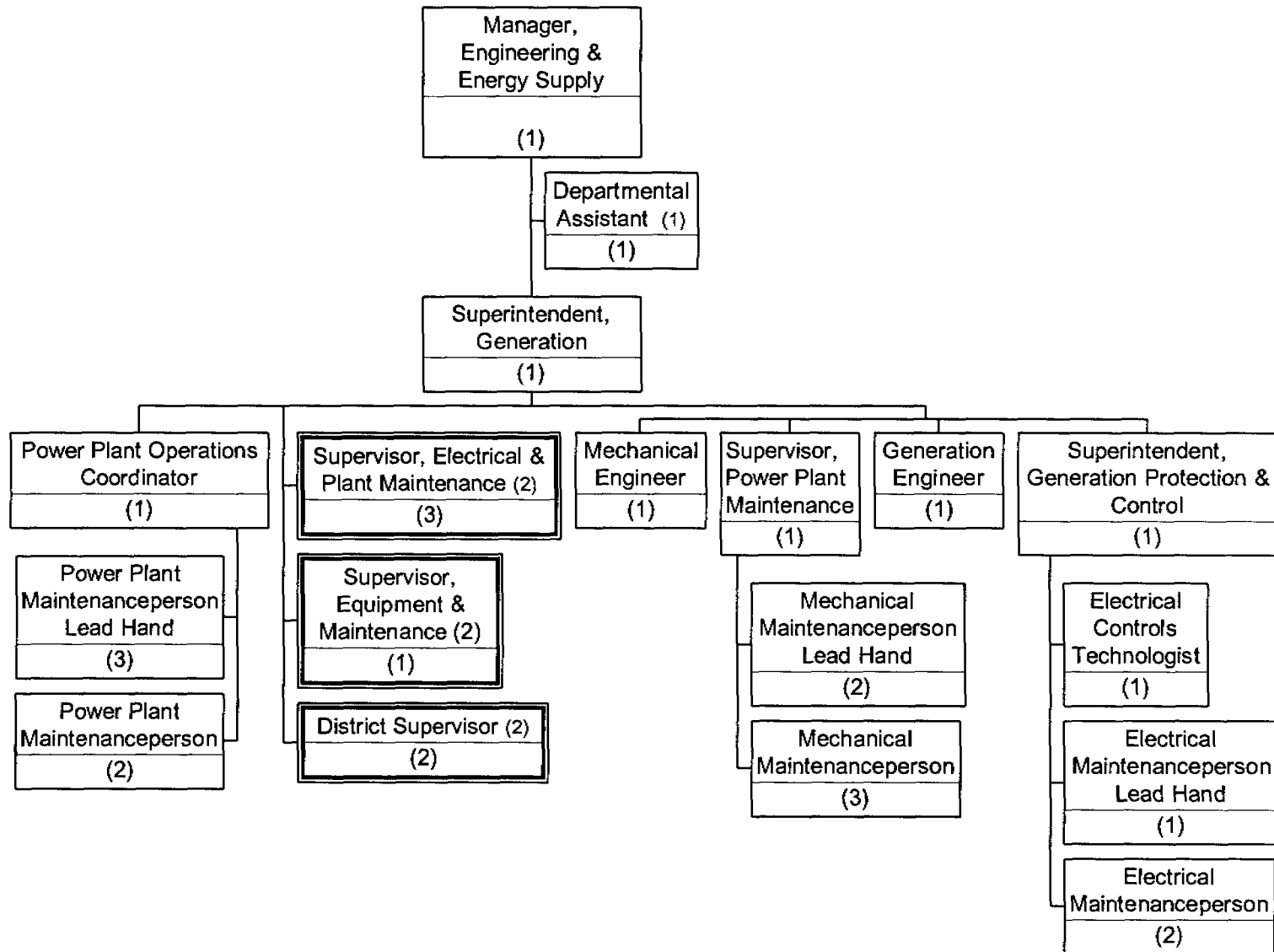




# Newfoundland Power Inc.

## Engineering & Operations

### Engineering & Energy Supply (Page 1 of 2)



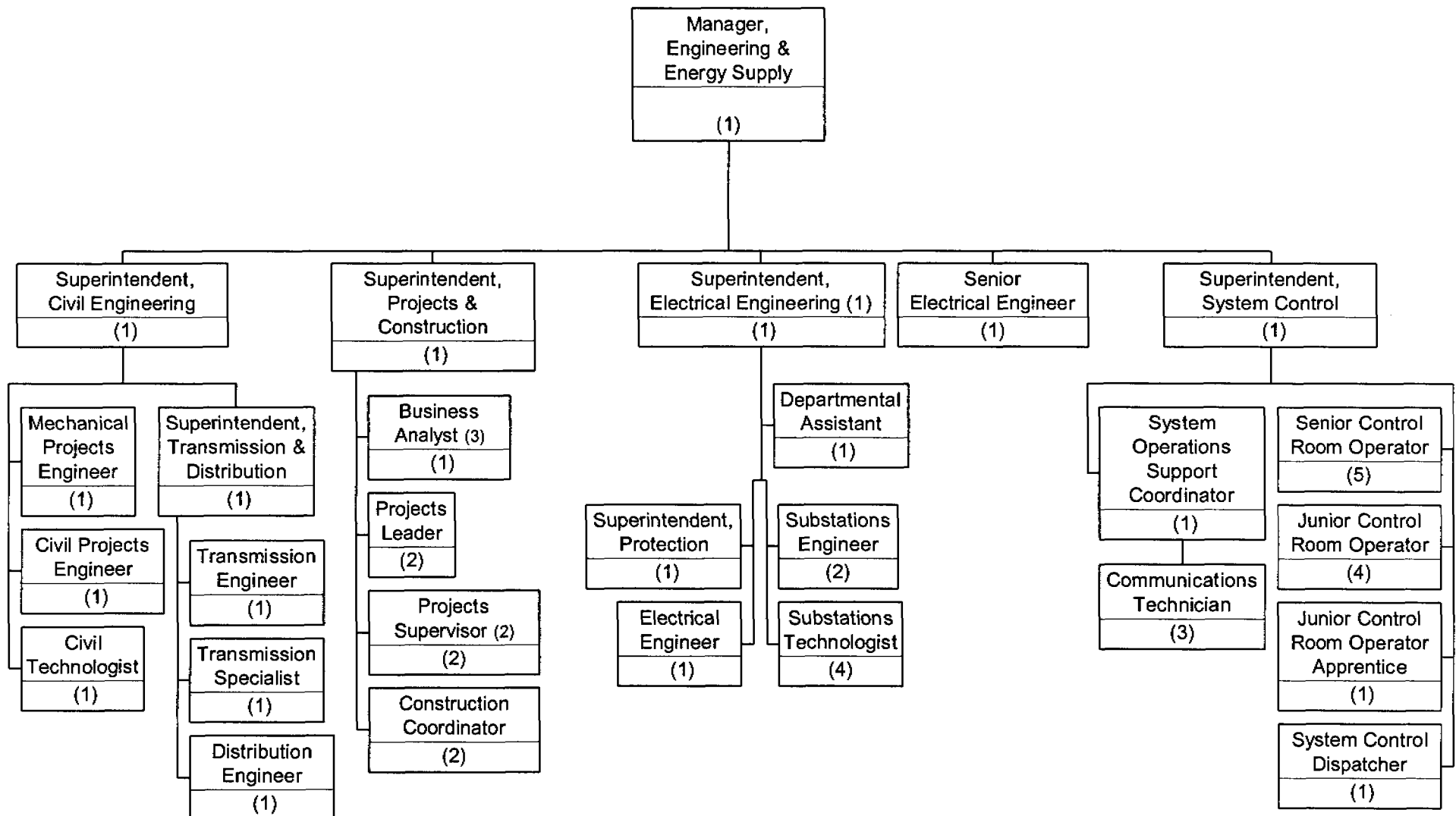
(1) Temporarily assigned to Corporate Offices.

(2) Dual reporting relationship with Regions.

# Newfoundland Power Inc.

## Engineering & Operations

### Engineering & Energy Supply (page 2 of 2)



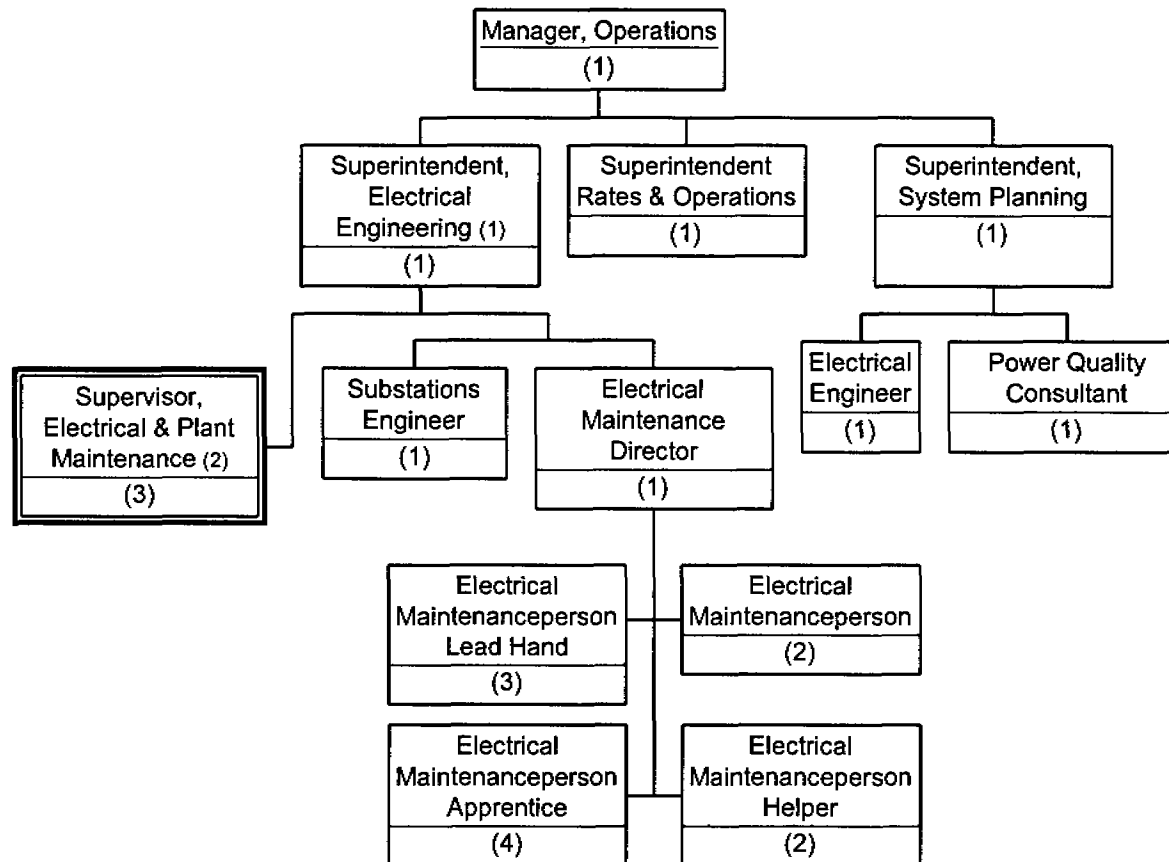
(1) Reports to Manager, Operations for electrical maintenance & functionally to Manager, Engineering & Energy Supply for substation engineering.

(2) Reports to Superintendent, Civil Engineering or Superintendent, Electrical Engineering on a project by project basis.

(3) Temporarily assigned from Finance.

# Newfoundland Power Inc.

## Engineering & Operations Operations

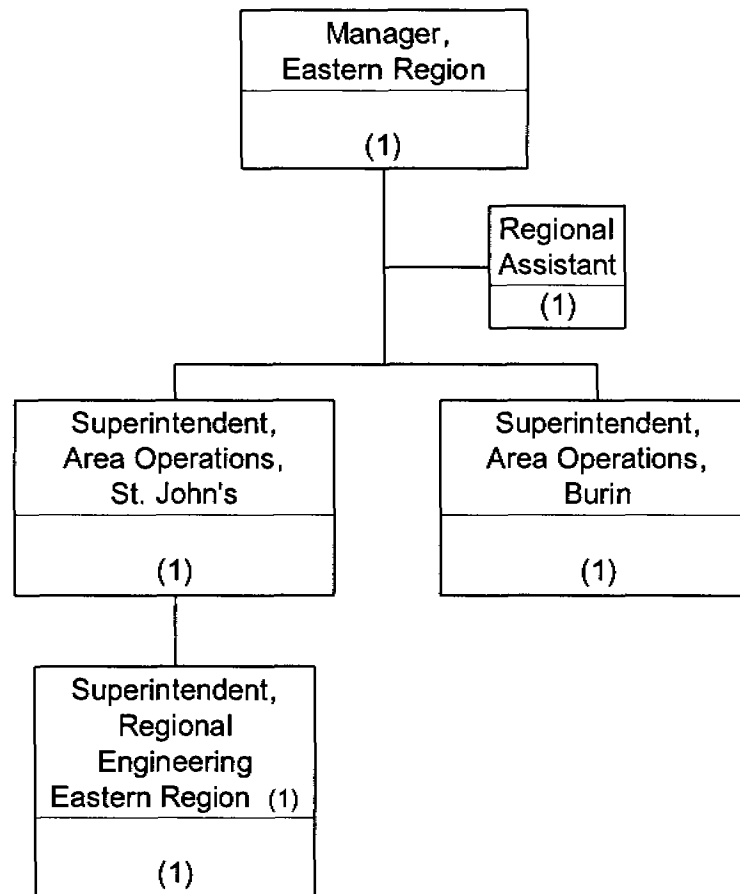


- (1) Reports functionally to Manager, Engineering & Energy Supply on substation planning & design.  
 (2) Dual reporting relationship with Regions.

# Newfoundland Power Inc.

## Engineering & Operations

### Eastern Region



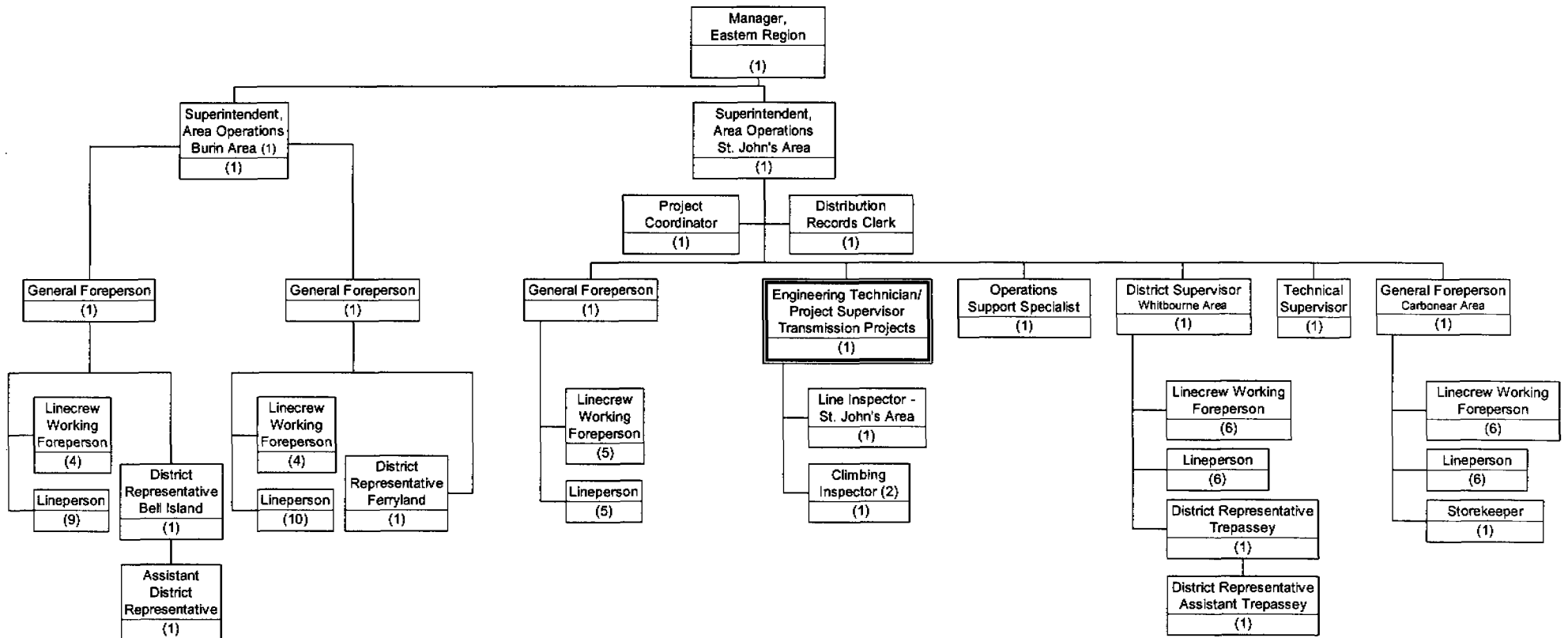
(1) Reporting to Supt. Area Operations, St. John's on an interim basis effective Jan. 20, 2003; employee temporarily assigned from Engineering & Energy Supply.

# Newfoundland Power Inc.

## Engineering & Operations

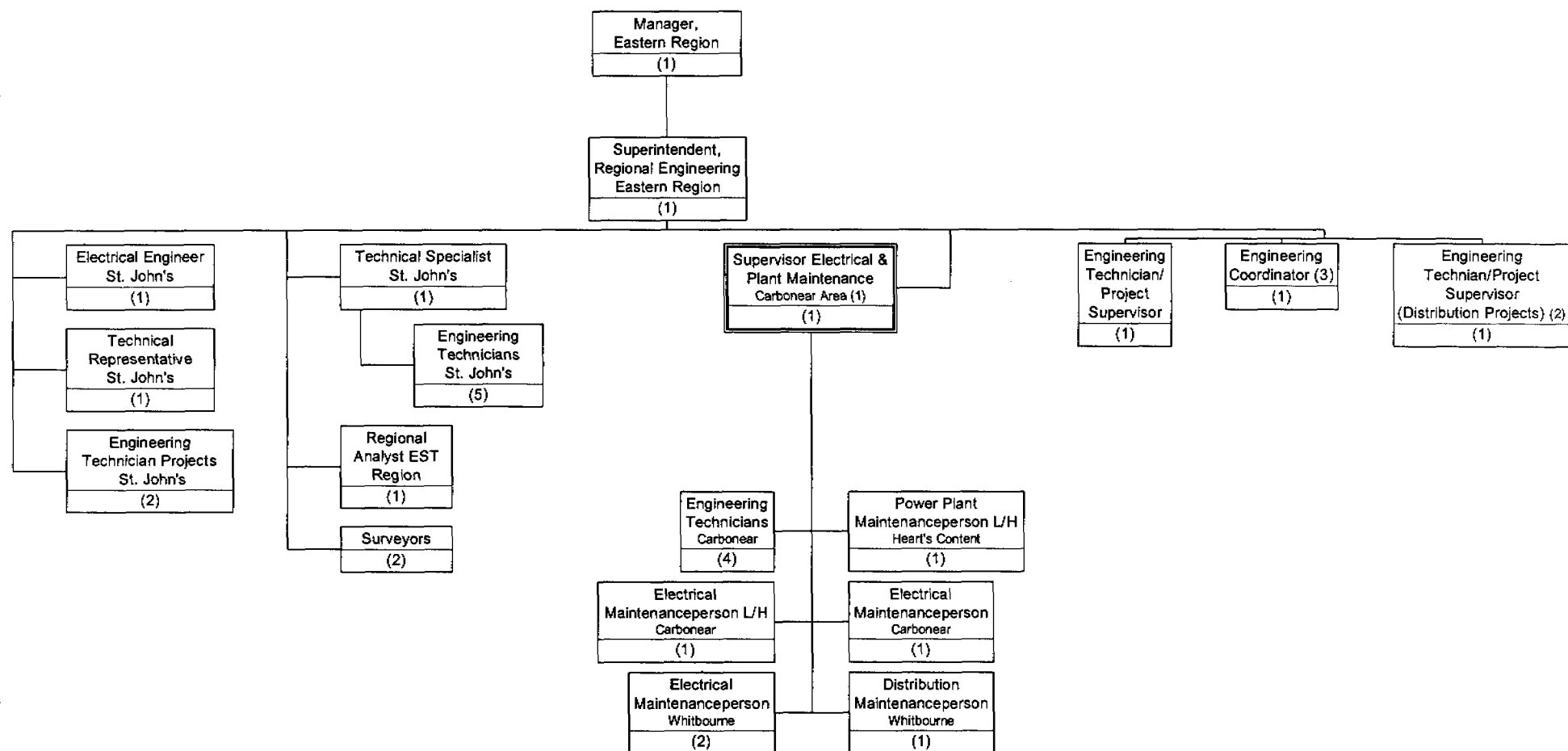
### Eastern Region

#### St. John's Area Operations



(1) Assuming responsibility for two St. John's area crews on an interim basis in addition to Burin area.

**Newfoundland Power Inc.**  
**Engineering & Operations**  
**Eastern Region**  
**Regional Engineering**



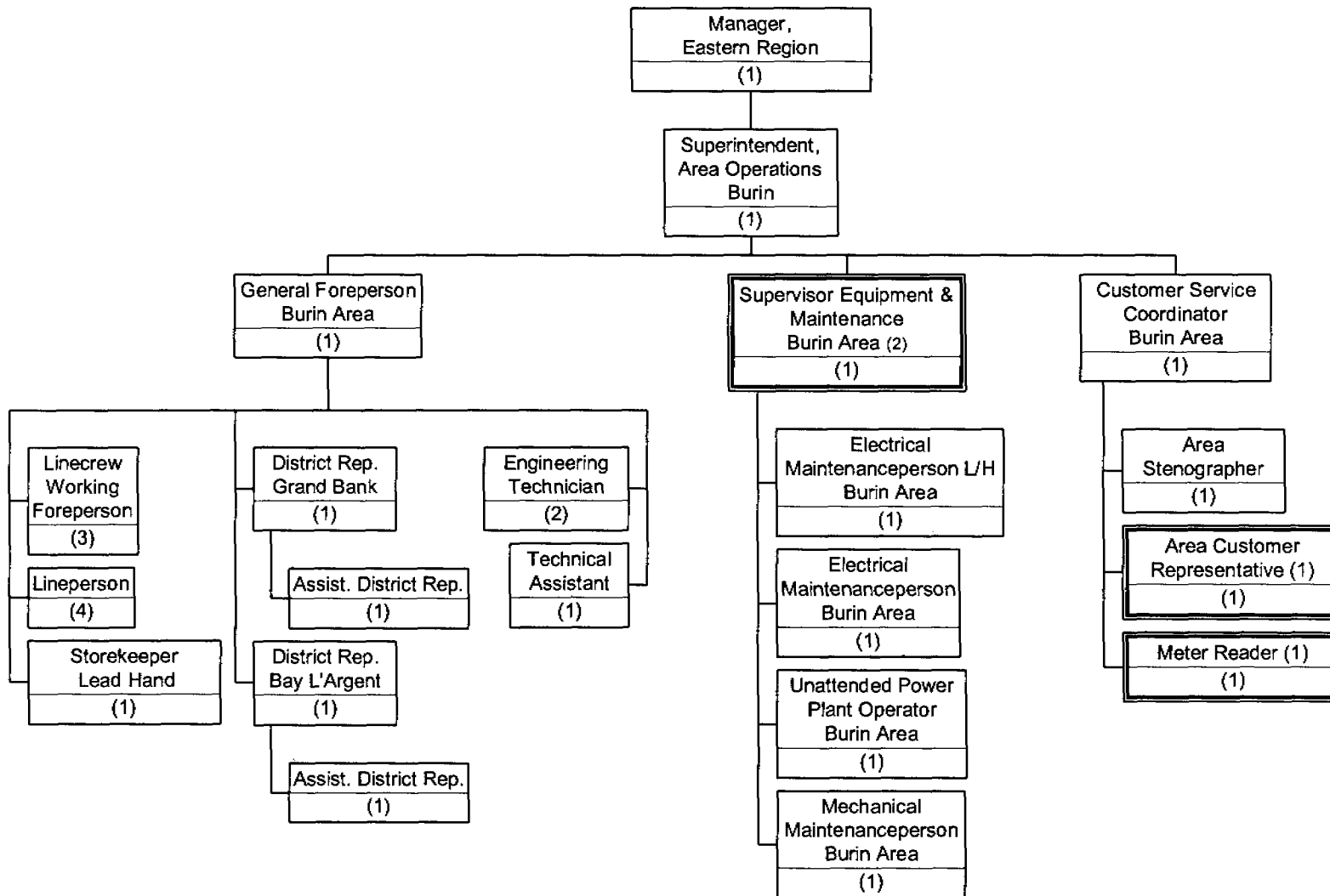
- (1) Dual reporting relationship to Superintendent, Electrical Engineering in Operations  
 (2) Temporarily assigned from Engineering & Energy Supply.  
 (3) Temporarily assigned from St. John's Area Operations.

# Newfoundland Power Inc.

## Engineering & Operations

### Eastern Region

#### Burin Area Operations



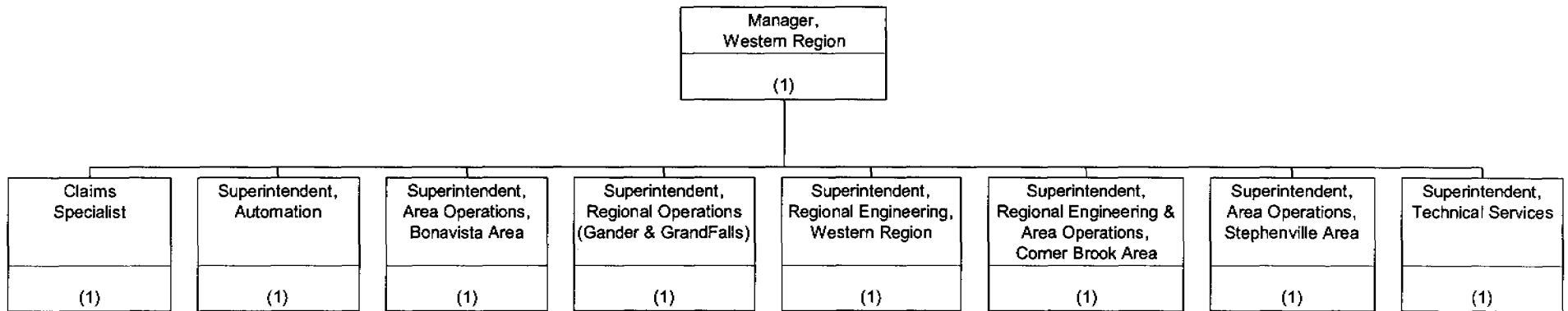
(1) Dual reporting relationship with Customer Service.

(2) Dual reporting relationship with Engineering & Energy Supply.

# Newfoundland Power Inc.

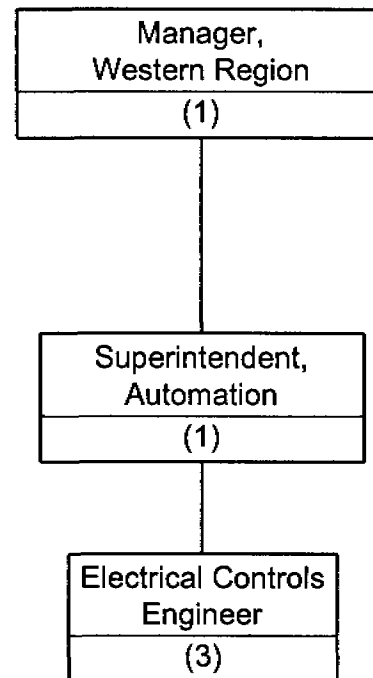
## Engineering & Operations

### Western Region

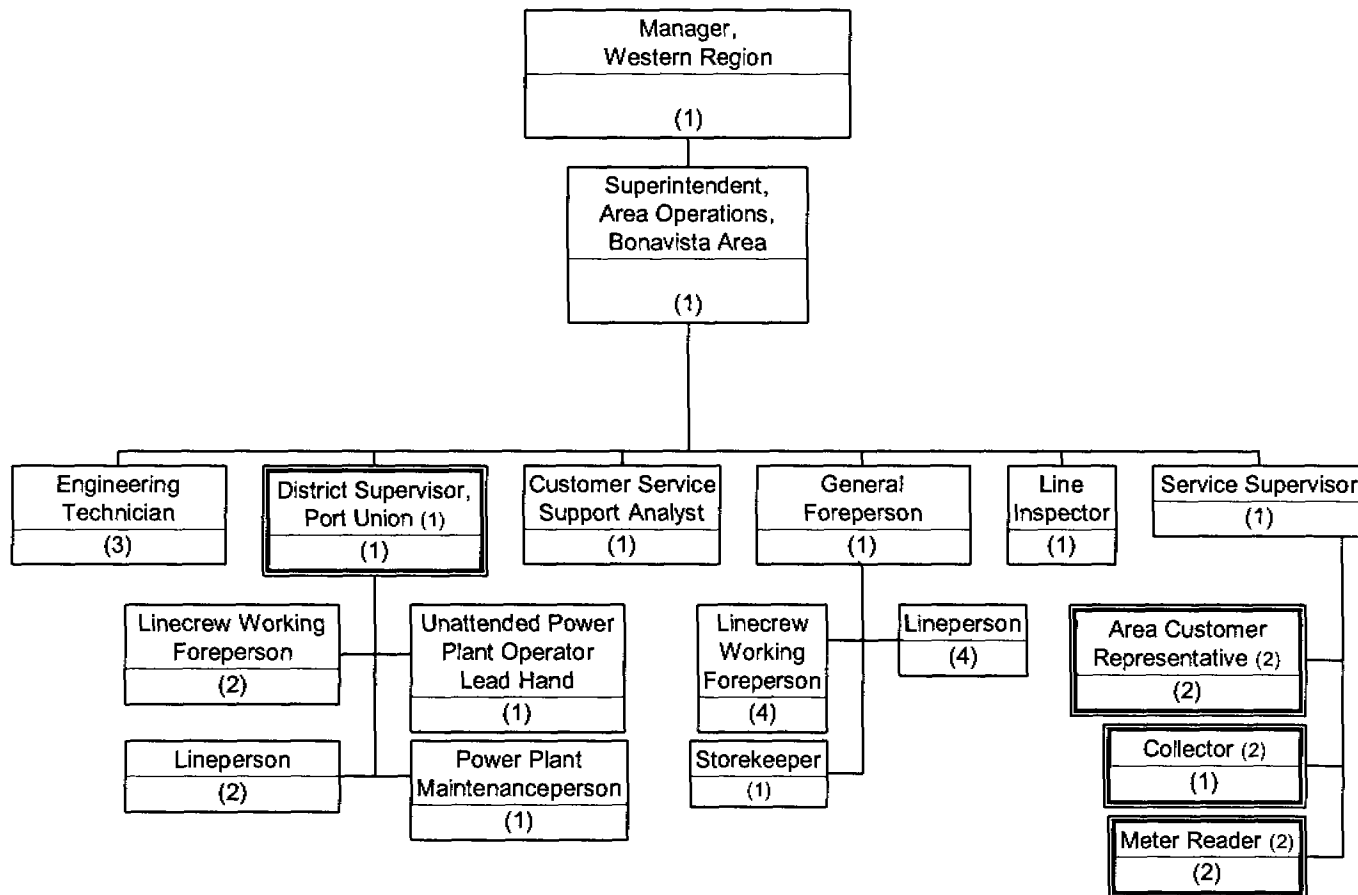




**Newfoundland Power Inc.**  
**Engineering & Operations**  
**Western Region**  
**Automation**



**Newfoundland Power Inc.**  
**Engineering & Operations**  
**Western Region**  
**Area Operations - Bonavista Area**



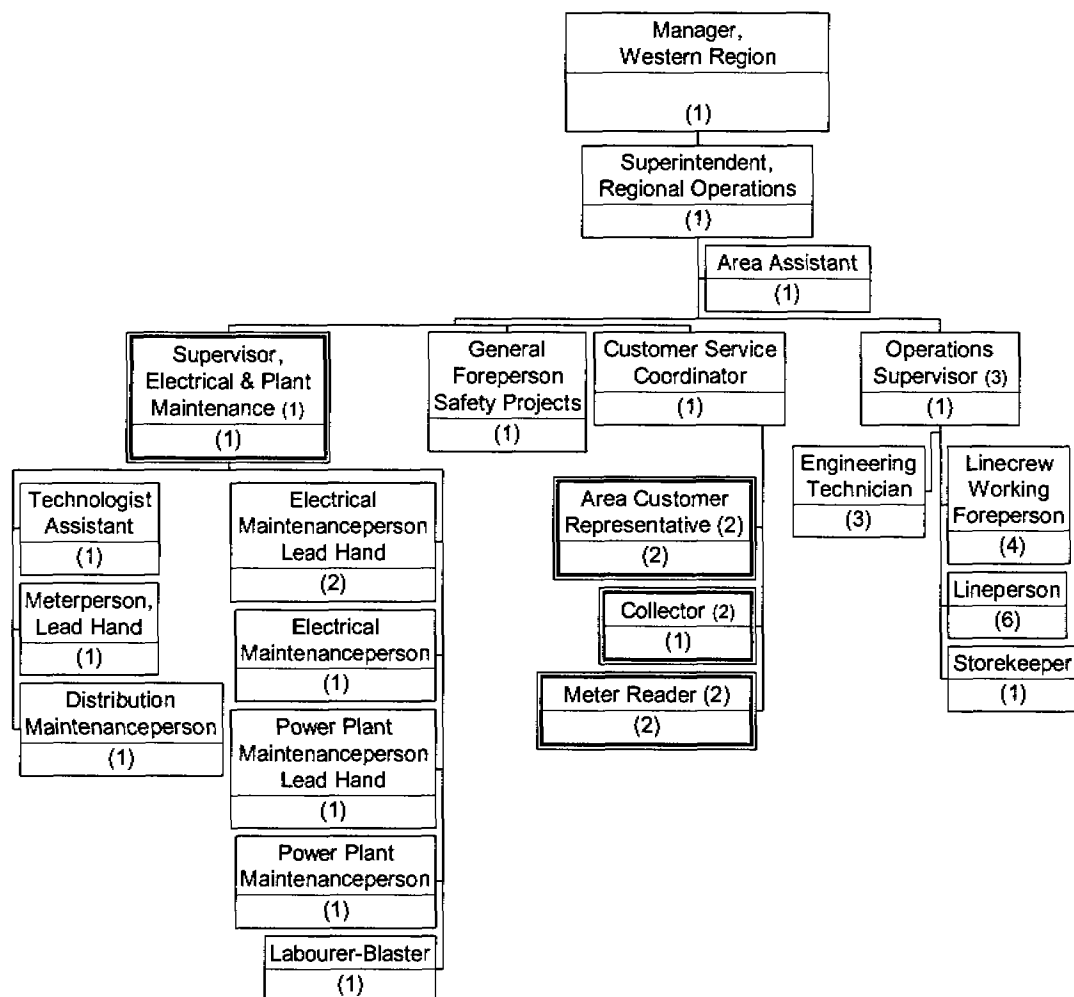
(1) Dual reporting relationship with Superintendent Generation.  
 (2) Dual reporting relationship with Customer Service.

# Newfoundland Power Inc.

## Engineering & Operations

### Western Region

### Regional Operations - Gander Area



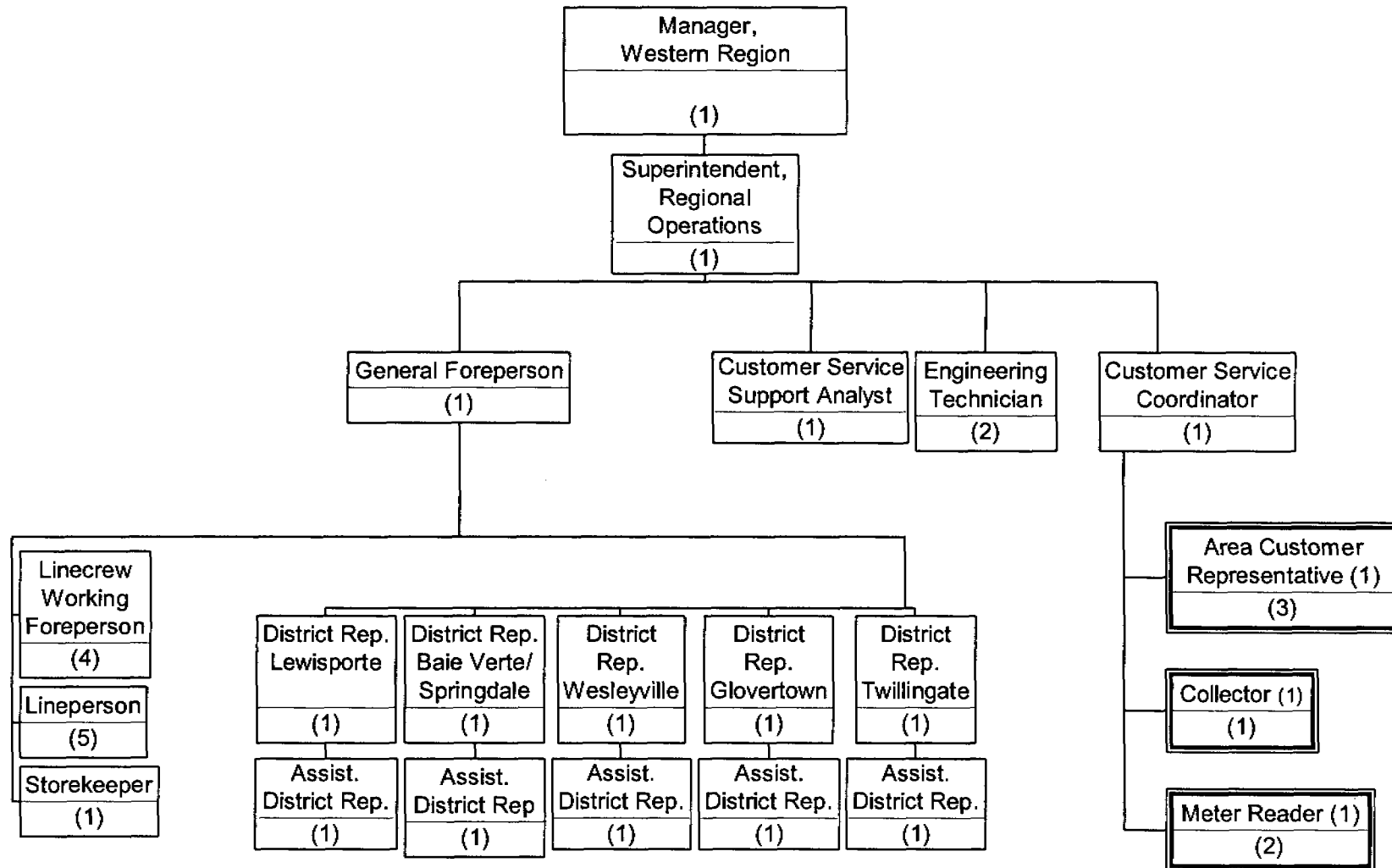
- (1) Reporting relationship with Engineering & Energy Supply and Operations.  
 (2) Dual reporting relationship with Customer Service.  
 (3) Effective January 20/03 two year temporary assignment.

# NEWFOUNDLAND POWER INC.

## Engineering & Operations

### Western Region

#### Regional Operations - Grand Falls Area



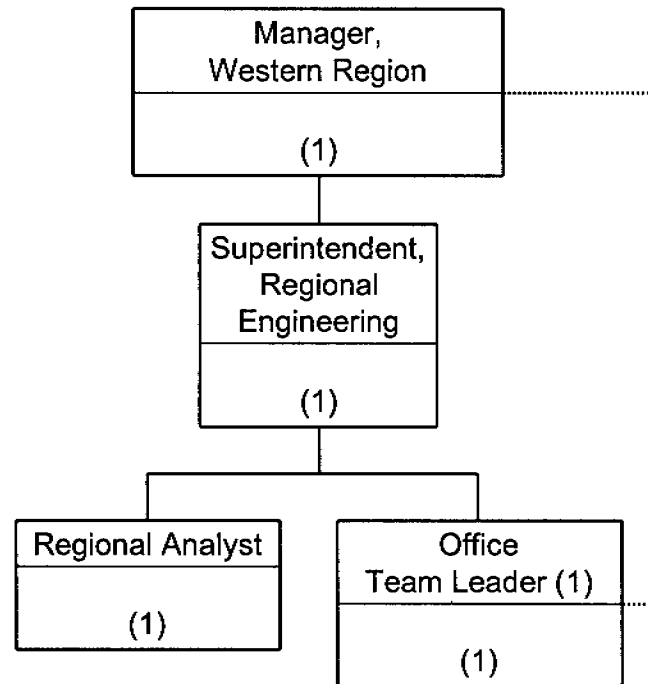
(1) Dual reporting relationship to Customer Service.

# Newfoundland Power Inc.

## Engineering & Operations

### Western Region

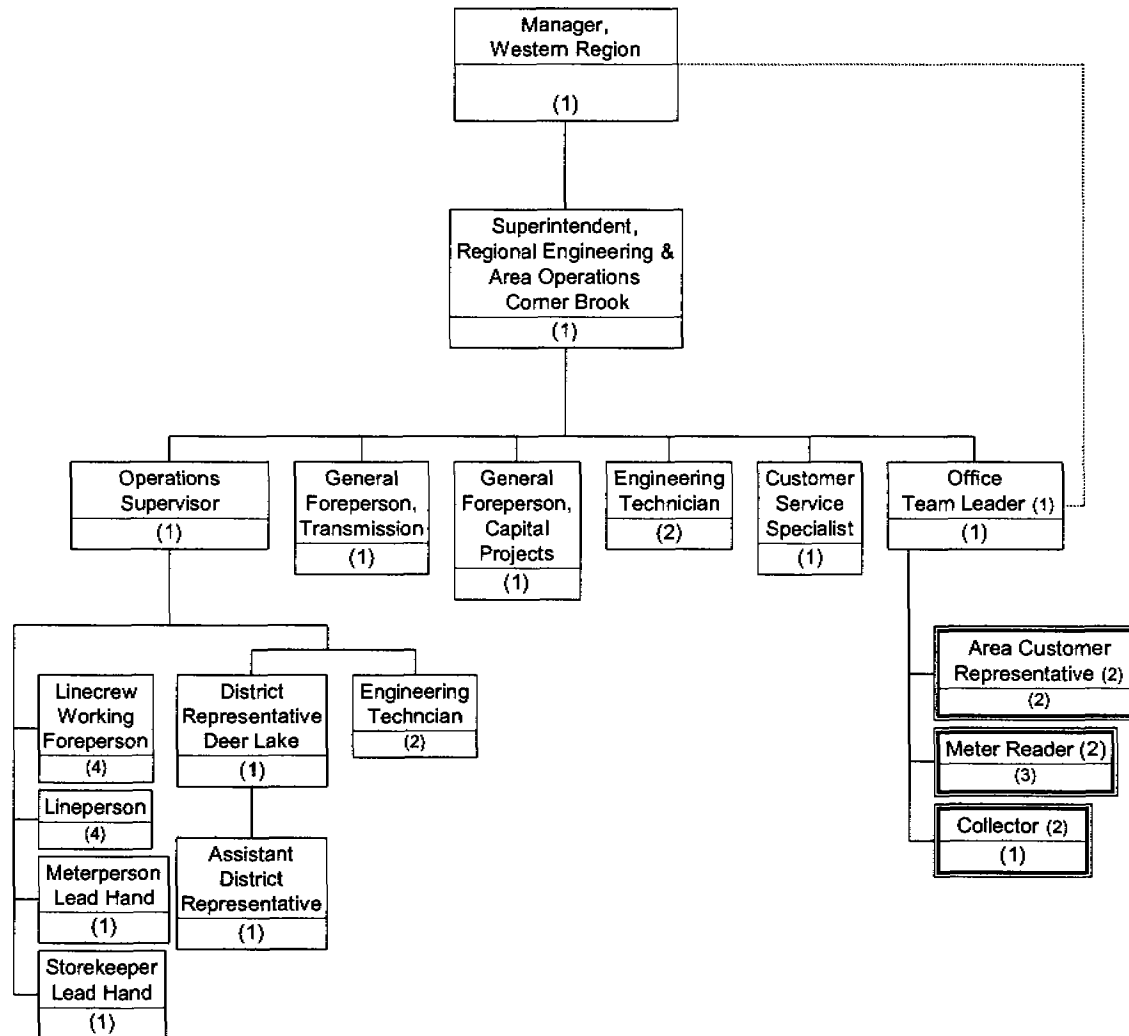
#### Regional Engineering - Corner Brook Area



(1) Dual reporting relationship

January 2003

**Newfoundland Power Inc.**  
**Engineering & Operations**  
**Western Region**  
**Area Operations - Corner Brook Area**



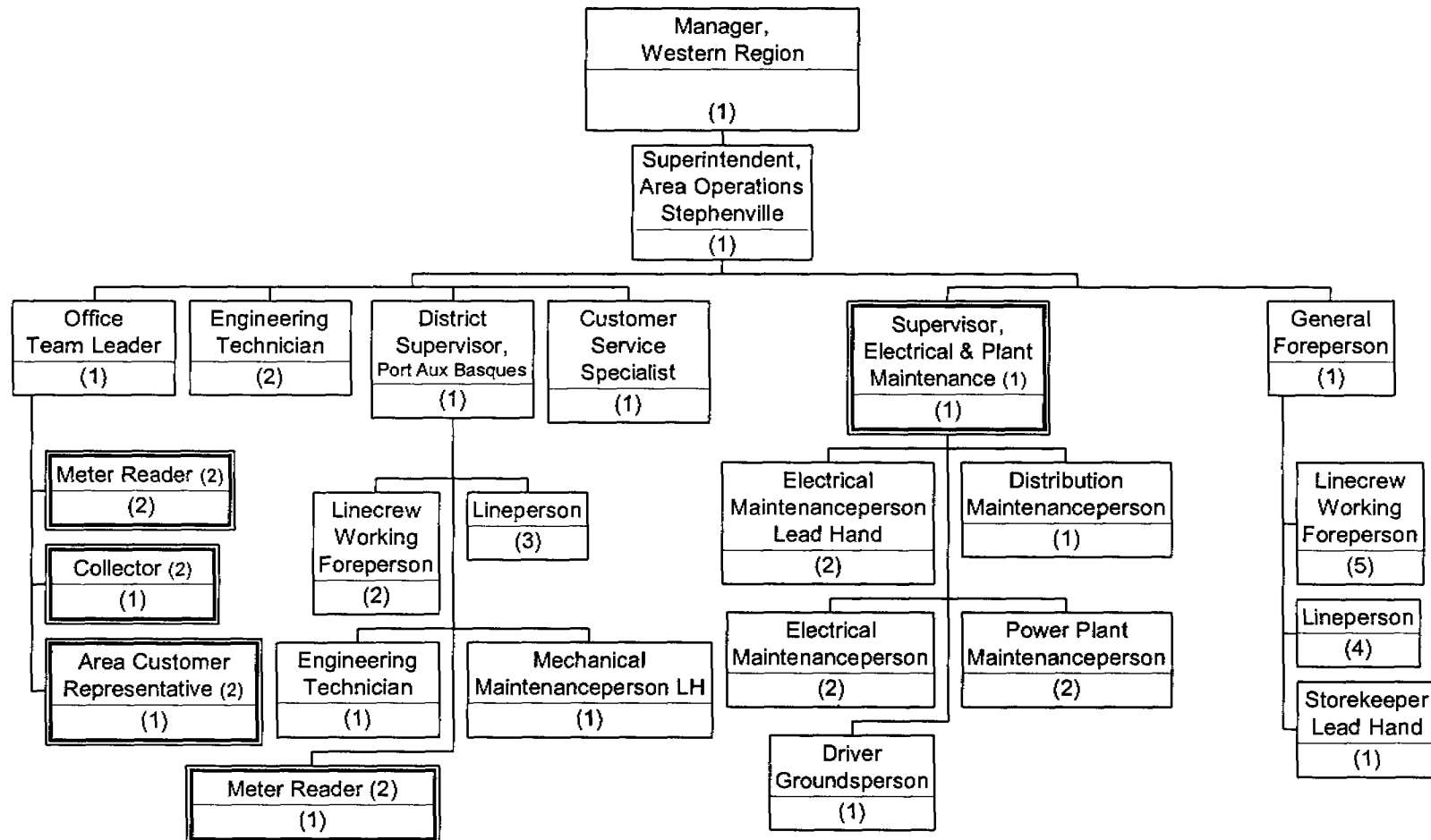
(1) Dual reporting relationship with Supt. Regional Engineering.  
 (2) Dual reporting relationship with Customer Service.

# Newfoundland Power Inc.

## Engineering & Operations

### Western Region

#### Area Operations - Stephenville Area



(1) Reporting relationship with Engineering & Energy Supply and Operations.  
(2) Dual reporting relationship with Customer Service.