

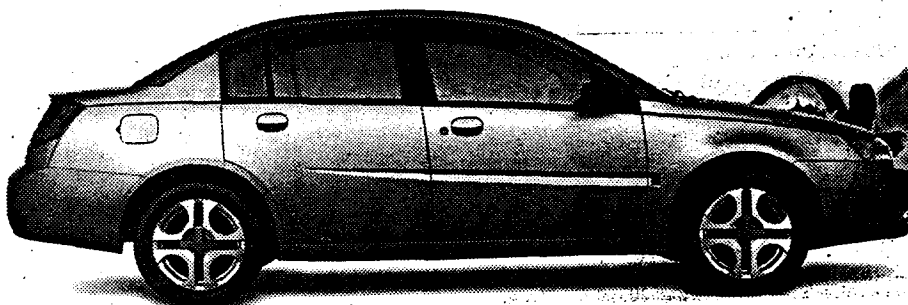
Saturn's Holiday Celebration



The all new 2003 Saturn ION Sedan

- Ecotec 2.2 L 140 hp Engine • Manual 5-Speed GETrag Transmission
- Dual Frontal Air Bags • AM/FM Stereo • Polymer Panels

Starting at
\$15,495*
MSRP plus freight of \$900

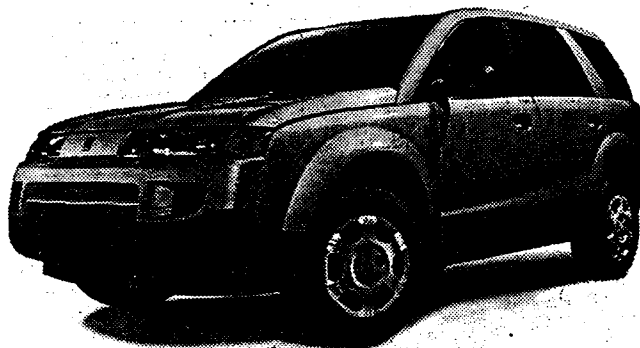


The 2003 Saturn VUE

\$21,980* or **\$269†**
MSRP plus freight of \$900 /mo./48 mos. lease
\$2,725 downpayment

SATURN MAKES THE FIRST PAYMENT**

- Manual Transmission • Air Conditioning • Integrated Roof Rails
- Rear Cargo Organizer and Storage Pockets • AM/FM Stereo with CD • Polymer Panels

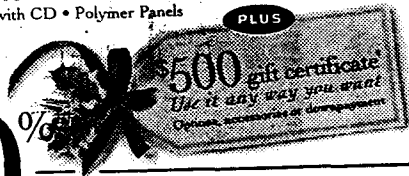


The Redesigned 2003 Saturn Mid-Size L-Series

\$21,480* or **\$284†**
Cash purchase price plus freight of \$900 /mo./48 mos. lease
\$2,450 downpayment

SATURN MAKES THE FIRST PAYMENT**

- Manual Transmission • Air Conditioning • Power Windows and Locks • Power Heated Mirrors • Remote Keyless Entry • AM/FM Stereo with CD • Polymer Panels



0% PURCHASE FINANCING UP TO 48 MONTHS ON REMAINING 2002 L-SERIES AND S-SERIES PLUS SATURN MAKES THE FIRST PAYMENT

All 2002 and 2003 Saturns come with a 5 year or 100,000 km Powertrain Warranty.

Buy online at saturncanada.com or call 1-888-4SATURN. *These offers are time limited, mutually exclusive and apply to all new in-stock 2003 ION, 2003 L-Series and 2003 Saturn VUE. **Offers based on 2003 Saturn ION 1 ISA, 2003 Saturn VUE ISA and 2003 Saturn L200 ISA. MSRP for 2003 ION model shown (2003 ION 3 ISG) is \$21,400 plus freight of \$900. Freight (\$900/\$900/\$900), license, insurance, registration, administration fees, PPSA and taxes not included. †Lease payment is based on a lease of 80,000 km over 4 years with an extra charge of 12 cents per kilometre over that distance. Lease payments include freight, PDI and excise tax, if applicable. License, insurance, registration, administration fees and taxes not included. Total obligation for lease examples shown are \$15,637 for the 2003 VUE ISA and \$16,068 for the 2003 L200 ISA. Financing rate applies only to customers with approved GMAC credit. Annual cost of borrowing of 0% per annum. Other lease options available. Example: \$10,000 at 0% APR, the monthly payment is \$209 for 48 months. Cost of borrowing \$0. Total obligation is \$10,000. Downpayment, trade and/or security deposit may be required. Monthly payment and cost of borrowing will vary depending on amount borrowed and downpayment/trade. *The monthly lease payment and the purchase price are not available with and are not calculated on the "cash purchase price" shown. The difference between the price for the lease/purchase finance offer and the "cash purchase price" offer is deemed under provincial disclosure laws to be a cost of borrowing, whether or not the same represents actual interest, and is required to be expressed as an actual percentage rate which is 0%. **First payment is paid for only through GMAC approved credit for finance up to 48 months or lease contracts up to 48 months, up to \$500 on financing inclusive of appropriate taxes. Offer applies only to vehicles delivered on or before December 31, 2002. †If you'd like to buy your 2003 Saturn vehicle based on cash purchase price, as an alternative to downpayment only. Applies only to vehicles delivered on or before December 31, 2002. *If you'd like to buy your 2003 Saturn vehicle at lease end, it's \$10,541 for the 2003 VUE ISA and \$10,282 for the 2003 L200 ISA plus taxes. ***Retailers are free to set individual selling and lease prices. Rates subject to change without notice. Retailer order or trade may be necessary. Offers apply to qualified retail customers only. See Retailer for further conditions and details.



It's different in a Saturn

Hickman Saturn Saab Isuzu
Corner of Kenmount Rd. & Peet St., St. John's 726-0716



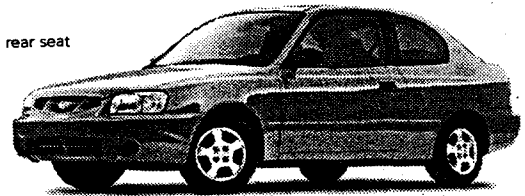
JUMP INTO A NEW HYUNDAI.

2002 ACCENT GS • 1.5 litre, multi-valve engine • Tachometer • 5-speed manual overdrive • 60/40 split folding rear seat • Tinted glass with shade band • Dual manual remote control side view mirrors • and much, much more.
CHECK OUT THE GREAT LEASE RATES ON THE 3-DR. ACCENT GS! AND 4-DR. GL

\$0 DOWN PAYMENT
\$0 SECURITY DEPOSIT
\$155 PER MO./
LEASE FROM 60 MOS.
FREIGHT AND P.D.E. INCL.

OR 0% PURCHASE FINANCING*
On all Accent models.
Up to 36 months.

ACCENT, #1 SELLING SUB-COMPACT IN CANADA*



MSRP \$12,395**

2002 ELANTRA GL • 2.0 litre, DOHC engine • Dual front airbags • 60/40 split folding rear seat • AM/FM/CD stereo • Remote fuel door and trunk release • Dual cup holders • Tilt steering • and much, much more.

\$179 PER MO./
LEASE FROM 48 MOS.
\$2,250 DOWN PAYMENT
FREIGHT AND P.D.E. INCL.
\$0 SECURITY DEPOSIT

OR 0% PURCHASE FINANCING*
On all Elantra models.
Up to 48 months.

For an extra \$20 a month Elantra VE adds these extras:
Air Conditioning • Cruise Control • Power Door Locks,
Windows and Heated Outside Mirrors



MSRP \$15,295**

2002 XG350 • ABS system with traction control • Dual front and side airbags (de-powered) • Leather seats • Power sunroof • AM/FM/CD stereo system w/6 speakers • Automatic climate control • Cruise control • Power windows, locks and heated mirrors • and much, much more.

\$365 PER MO./
LEASE FROM 48 MOS.
\$3,495 DOWN PAYMENT

OR 1.8% PURCHASE FINANCING*
Up to 36 months.



MSRP \$32,295**

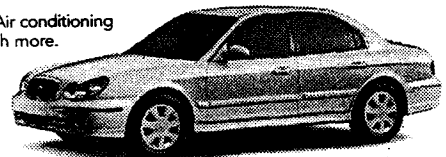


THE 2003s ARE ARRIVING.

2003 SONATA GL • 2.4 litre, DOHC engine • Power package • AM/FM/CD with 6 speakers • Air conditioning • Cruise control • Heated exterior mirrors • Automatic transmission with SHIFTRONIC™ • and much, much more.

\$259 PER MO./
LEASE FROM 48 MOS.
\$1,995 DOWN PAYMENT

OR 1.8% PURCHASE FINANCING*
On all Sonata models.
Up to 36 months.



MSRP \$21,595**

2003 TIBURON • 2.0 litre, DOHC engine • 5-speed manual overdrive transmission • AM/FM/CD stereo w/6 speakers • Power windows/door locks/dual heated outside mirrors • Fog lamps • Alloy wheels • P205/55R-16 Michelin® performance radial tires • and much, much more.

\$249 PER MO./
LEASE FROM 48 MOS.
\$1,895 DOWN PAYMENT
FREIGHT AND P.D.E. INCL.

OR 0% PURCHASE FINANCING*
On selected Tiburon models.
Up to 36 months.



MSRP \$19,995**

2003 SANTA FE • 2.4 litre, 16-valve DOHC 4-cylinder engine • 5-speed manual transmission • Front wheel drive • 4-wheel disc brakes • 16" alloy wheels with BFGoodrich® tires • AM/FM/CD stereo • Power windows, power locks • and much, much more.

\$249 PER MO./
LEASE FROM 48 MOS.
\$2,995 DOWN PAYMENT

OR 3.8% PURCHASE FINANCING*
On all Santa Fe models.
Up to 36 months.



MSRP \$21,050**

www.hyundaicanada.com

LONGER LASTING PROTECTION: 5-Year/100,000 km Powertrain Warranty • 3-Year/Unlimited km 24 Hour Roadside Assistance Program includes fuel delivery service, flat tire changing, lock-out service, towing service and more. Just one toll-free call away, 24 hours a day.

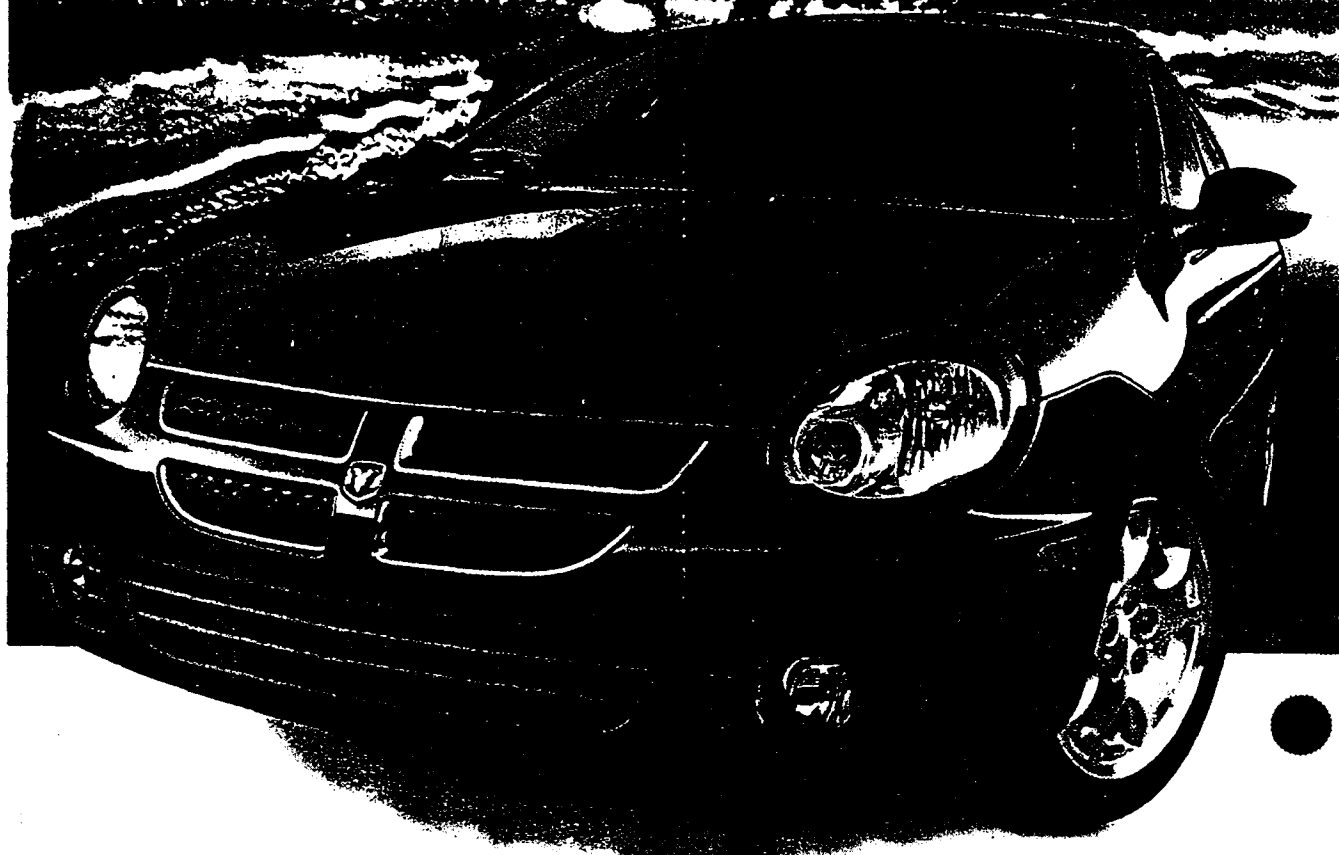


HYUNDAI

DRIVING IS BELIEVING

Leasing program available from Hyundai Financial Services based on new 2002 Accent GS 3-Door MSRP from \$12,395, 2002 Elantra GL MSRP from \$15,295, 2002 Tiburon MSRP from \$19,995, 2003 Sonata GL MSRP from \$21,595, 2003 Santa Fe GL 4 FWD MSRP from \$21,050, 2002 XG350 MSRP \$32,295, interest rate 0.31%/0.11%/5.1% 7.08%/1.73%, \$155/\$179/\$249/\$259/\$249/\$365 per month for a 60/48/48/48/48 month walkaway lease. Total lease obligation of \$8,300/\$8,582/\$11,952/\$12,432/\$11,952/\$17,520 and optional purchase price of \$3,803/\$5,073/\$10,080/\$10,282/\$10,082/\$12,711. Down payment of \$0/\$2,250/\$1,895/\$1,995/\$2,995/\$3,495. Security deposit (\$0/\$0/\$249/\$259/\$249/\$365). Freight and P.D.E. for Accent, Elantra and Tiburon included, for Sonata, Santa Fe and XG350 extra. Taxes, license and \$350 lease acquisition fee extra. 20,000 km mileage allowance per year applies. Additional km charge of \$0.10. **2002 Accent GS 3-Door MSRP from \$12,395, 2002 Elantra GL MSRP from \$15,295, 2002 Tiburon MSRP from \$19,995, 2003 Sonata GL MSRP from \$21,595, 2003 Santa Fe GL 4 FWD MSRP from \$21,050, 2002 XG350 MSRP \$32,295. All MSRP prices exclude freight, license, P.D.E. and taxes. Dealer may sell for less. 10% purchase financing available on all 2002 Accent GS, 2002 Elantra GL, 2002 Tiburon models for 24 or 36 month terms, for up to 48 month terms on all 2002 Elantra models. 1.8% purchase financing available on all 2003 Sonata and 2002 XG350 models for 24 or 36 month terms. 3.8% purchase financing available on all 2003 Santa Fe models for 24 or 36 month terms. Financing example: 2002 Accent GS 3-Door 1.8%/3.8% per annum equals \$277.80/\$208.33/\$285.55/\$294.35 per month for 36/48/36/36 months. C.O.B. is \$0.090/\$0.279/\$0.596/\$0.60 for a total obligation of \$10,000.00/\$10,000.00/\$10,279.80/\$10,596.60. All purchase and lease offers are for a limited time O.A.C. and may not be combined with any other offer. See dealer for details. Source: A.I.A.M.C. sales January to September 2002.

BORN TO BE ALIVE



INTRODUCING THE NEW DODGE SX 2.0

Cash purchase for

\$14,495*

or lease for

\$198[†] per month

48-month lease. Down payment of \$2,700 or equivalent trade. \$730 freight included.

Other 48-month leases offered

Monthly rates	Down payment
\$215 [‡]	\$1,999
\$262 [‡]	\$0

NO SECURITY DEPOSIT[†]
EXTENDED FOR A LIMITED TIME ON ALL LEASES

2003 Dodge SX 2.0

132 hp • CD player • Fog lamps • Tilt steering • Sentry-Key® Theft Deterrent System
All standard

THE BEST PROTECTION
WE'VE EVER OFFERED ON ALL
2003 DODGE VEHICLES.



7 YEARS OR 115,000KM
ENGINE AND TRANSMISSION
WARRANTY. PLUS 24 HOUR
ROADSIDE ASSISTANCE.[‡]

ONLY AT YOUR DODGE STORE



Dodge SX 2.0 customers read the fine print: * These are limited time offers which may not be combined with any other offers except Graduate Rebate and apply to retail deliveries on selected new in-stock 2003 vehicles. Retailer may sell lease for less. Retailer order/trade may be necessary. † See retailer for complete details and conditions. ‡ Based on a 48-month lease for 2003 Dodge SX 2.0 21D (shown with optional XM[®] Lease excludes licence, registration, insurance and taxes. Total lease obligation is \$12,204 with \$2,700 down; \$12,319 with \$1,999 down; \$12,319 with \$0 down. Lease finance interest rate is 6.6%. Kilometres limited to 81,600; charge of \$0.15/km for excess kilometres. Subject to approval by Chrysler Financial Canada. * Cash purchase price is also eligible to cash purchase only of the Dodge SX 2.0 21D and includes factory to retailer incentives. Cash purchase price excludes freight, taxes, licence, insurance and registration. ‡ See retailer for complete details and conditions. †† While supplies last. ‡ 24-hour roadside assistance. ‡ Warranty valid for all new 2003 model year vehicles to 7 years or 115,000km, whichever comes first. Some conditions apply. See retailer for details. Dodge is a registered trademark of DaimlerChrysler Corporation used under license by DaimlerChrysler Canada Inc. is a wholly owned subsidiary of DaimlerChrysler AG.

GRADUATE

