

**Q. SUBSTATIONS**

**PUB 5.0 (RE: p. 19 & 20 of 73) Replacement and Standby Substation Equipment (\$1,052,000)**

**PUB 5.1**

**Please provide a comparison for each year from 2000 to 2004F inclusive of the budgeted capital expenditures vs. the actual and graph variances. Please show separately the amount spent on Corporate Spares and Replacements.**

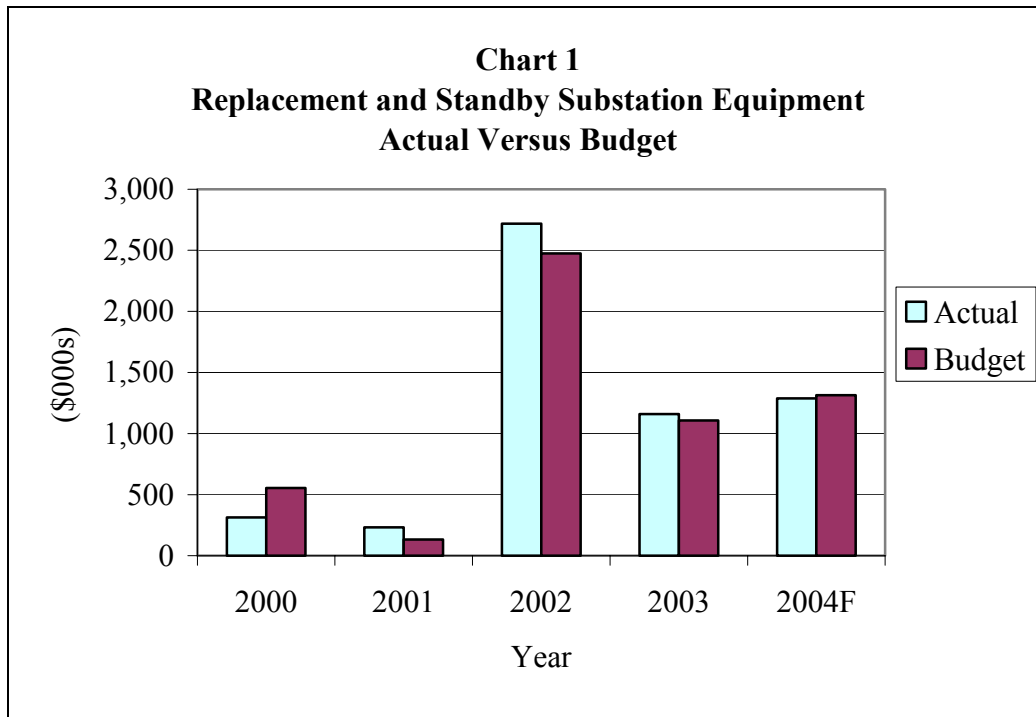
- A. Table 1 provides a comparison of the actual versus budgeted expenditures for the Replacement and Standby Substation Equipment project. Table 2 provides a comparison of the actual versus budgeted expenditures for Corporate Spares & Replacements. Charts 1 & 3 graphically compare actual versus budget expenditures, while Charts 2 & 4 show annual variances as a percentage of budget.

<b>Table 1 Replacement and Standby Substation Equipment Actual Versus Budgeted Expenditure 2000 - 2004F (\$000s)</b>			
<b>Year</b>	<b>Actual<sup>1</sup></b>	<b>Budget<sup>2</sup></b>	<b>Variance</b>
2000	313	556	(243)
2001	232	134	98
2002	2,716	2,475	241
2003	1,159	1,107	52
2004F	1,287	1,314	(27)

<sup>1</sup> Actual expenditures include carryovers from prior years.

<sup>2</sup> Includes supplementary changes approved by the Board.

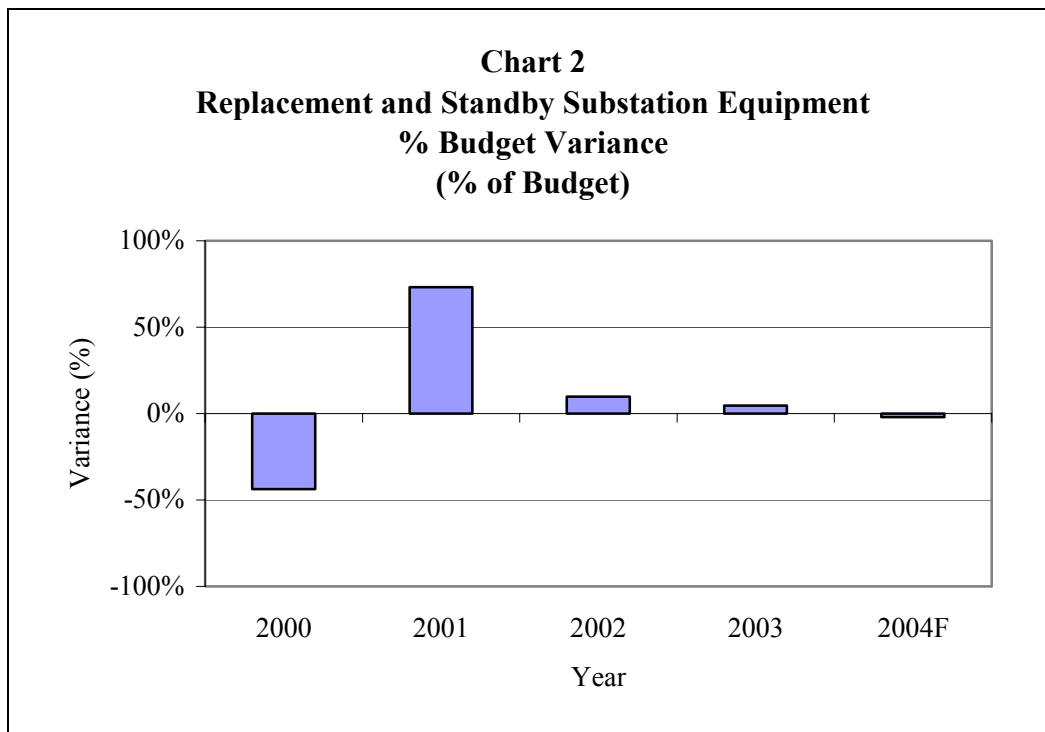
1



2

3

4



5

6

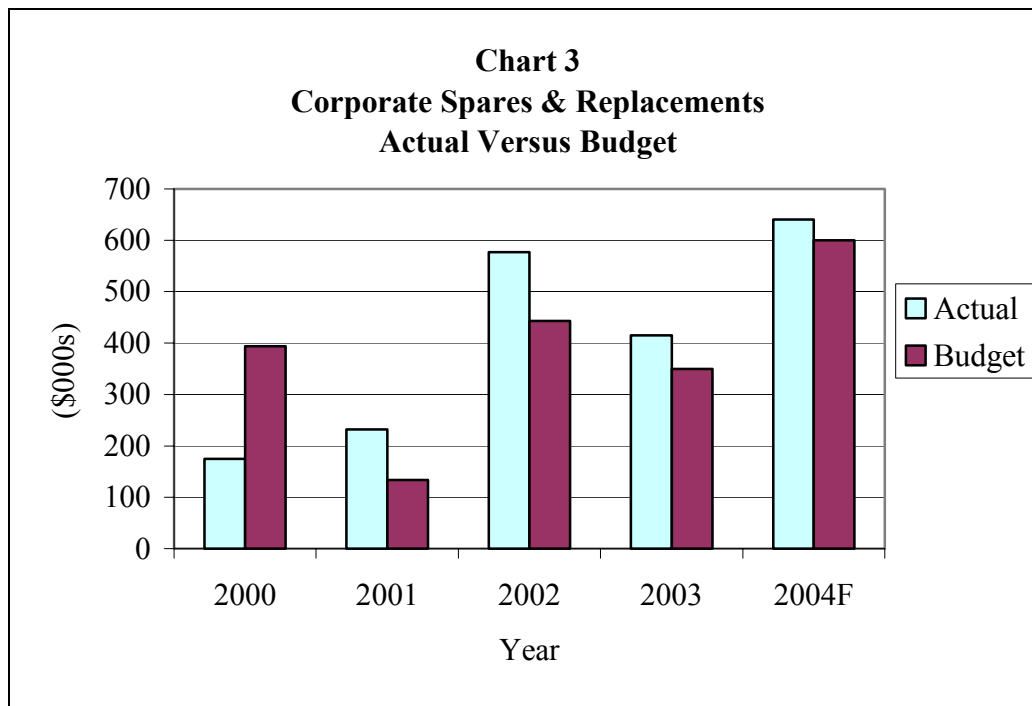
**Table 2**  
**Corporate Spares & Replacements**  
**Actual To Budgeted Expenditure**  
**2000 To 2004F**  
**(\$000s)**

Year	Actual <sup>1</sup>	Budget <sup>2</sup>	Variance
2000	175	394	(219)
2001	232	134	98
2002	577	443	134
2003	415	350	63
2004F	640	600	40

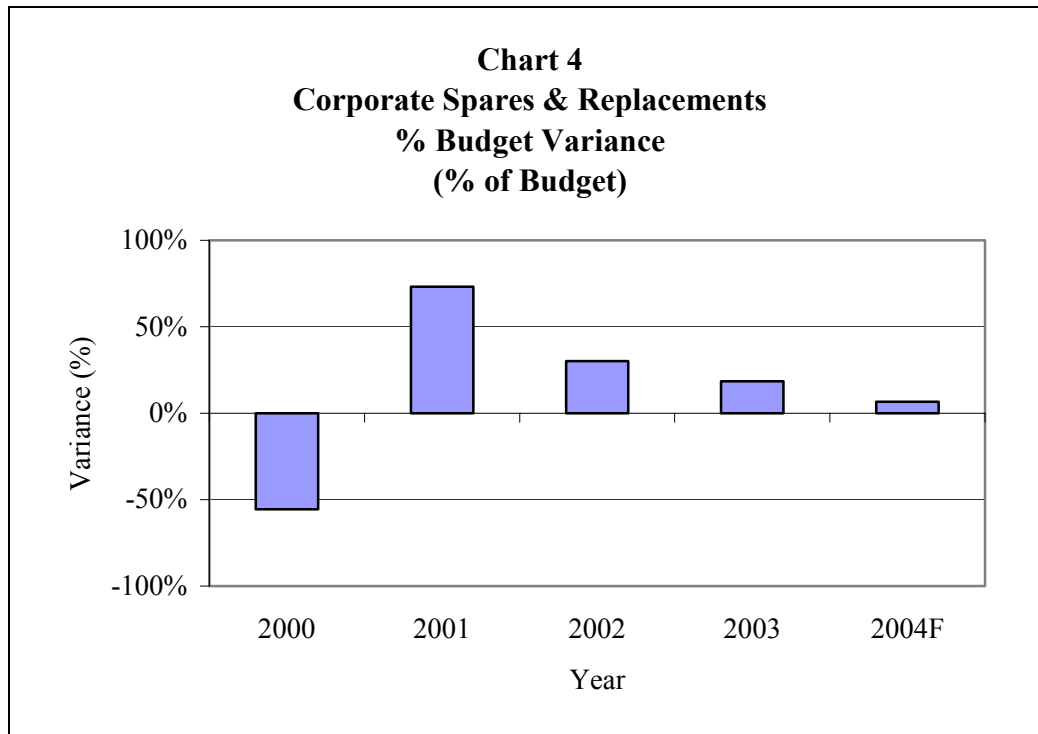
<sup>1</sup> Actual expenditures include carryovers from prior years.

<sup>2</sup> Includes supplementary changes approved by the Board.

**Chart 3**  
**Corporate Spares & Replacements**  
**Actual Versus Budget**



1



2