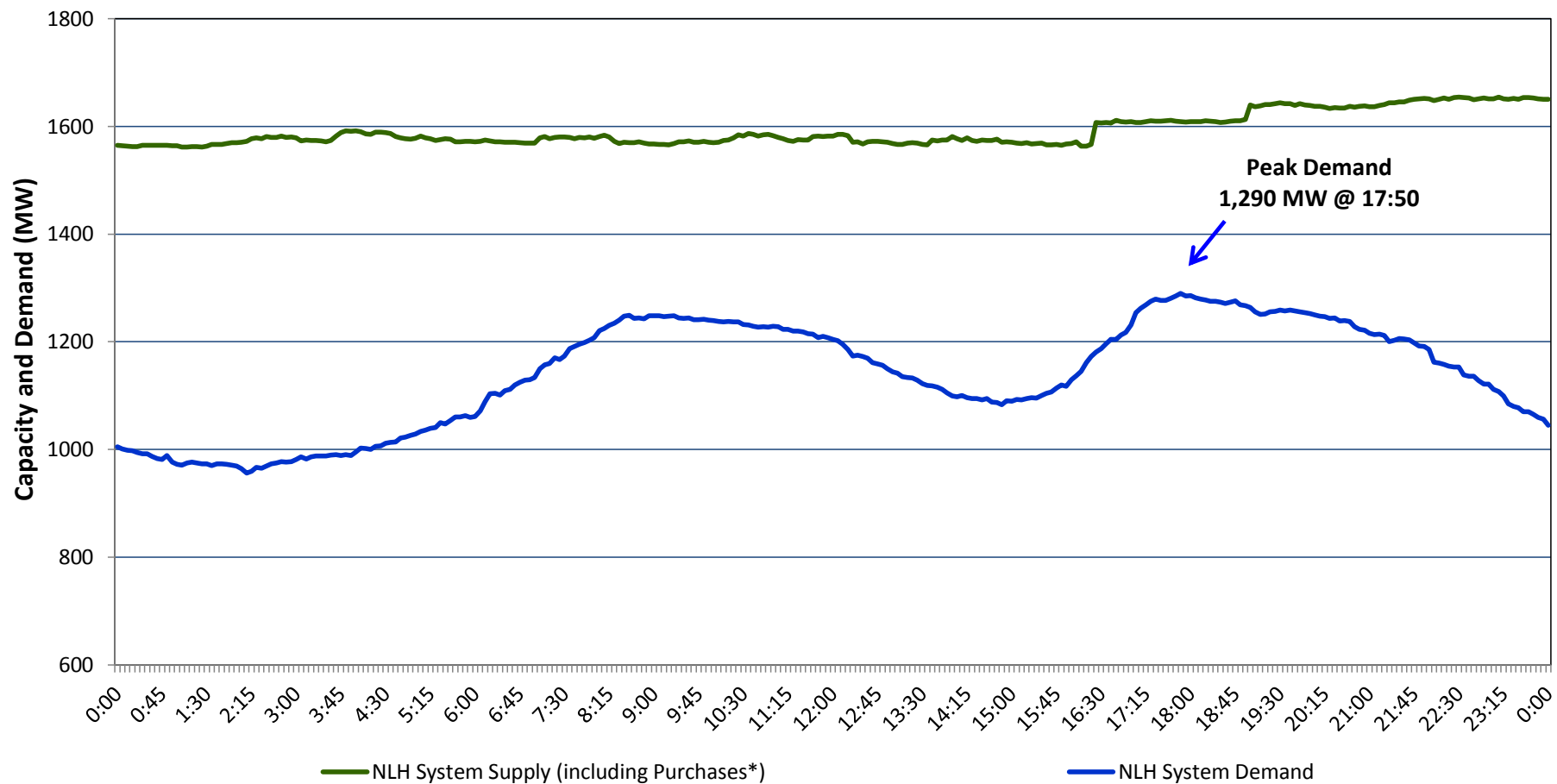


## Newfoundland and Labrador Hydro

### NLH System Supply and Demand

### January 25, 2014



\* Purchases include Nalcor Exploits and Star Lake, Rattle Brook, CBPP Co-Gen, Wind Generation, and CBPP Curtailable Load (60 MW)

### Previous Day's NLH System Supply Notes<sup>1,2</sup>:

- Ongoing derating for the Stephenville Gas Turbine (to 25 MW).
- Granite Canal Unit returned to service at 1616 at full capability following the planned outage commencing the previous day.
- Holyrood Unit 3 boiler feed pump repairs completed. Unit tested to 100 MW at 1900 hours. Full load testing scheduled for January 26.

26-Jan-2014 NLH System Outlook <sup>3</sup>			Five-Day Forecast		Temperature (°C)		NLH System Demand (MW)	
					Morning	Evening	Morning	Evening
Available NLH System Supply: <sup>4</sup>	1,640	MW	Sunday, January 26, 2014		-3	2	1,100	1,075
Current St. John's Temperature:	-2	°C	Monday, January 27, 2014		-4	-3	1,275	1,300
Current St. John's Windchill:	-11	°C	Tuesday, January 28, 2014		4	-1	1,000	1,225
NLH System Peak Demand Forecast:	1,100	MW	Wednesday, January 29, 2014		-10	-7	1,350	1,325
			Thursday, January 30, 2014		-8	-7	1,300	1,325

- Notes:
1. Generation outages for running and corrective maintenance are included. These are not unusual for power system operations. They generally do not impact customer supply. The power system operators schedule outages to system equipment whenever possible to coincide with periods when customer demands are low and sufficient supply reserves are available. However, from time to time equipment outages are necessary and reserves may be impacted.
  2. Due to the Island Interconnected System being isolated from the larger North American grid, when there is a sudden loss of large generating units some customer's load must be interrupted for short periods to bring generation output equal to customer demand. This automatic action of power system protection, referred to as underfrequency load shedding, is necessary to ensure the integrity and reliability of system equipment. Underfrequency events typically occur 5 to 8 times per year on the Island Interconnected System and the resultant customer load interruptions are generally less than 30 minutes.
  3. As of 0800 Hours.
  4. Gross output including station service at Holyrood (24.5 MW) and improved hydraulic output due to water levels (35 MW). Includes CBPP Curtailable Load (60 MW). Excludes wind generation.

### 26-Jan-2014 Island Demand<sup>1</sup>

Island Peak Demand Forecast:	1,300	MW	Previous Day's Island Peak Demand:	1,475	MW @	17:45
------------------------------	-------	----	------------------------------------	-------	------	-------

- Note:
1. The Island supply includes generation owned by NLH, purchased by NLH and generation owned by Newfoundland Power (NP) and Corner Brook Pulp and Paper (CBPP) to supply their needs. The total power produced and purchased by NLH is referred to as the NLH System Supply.