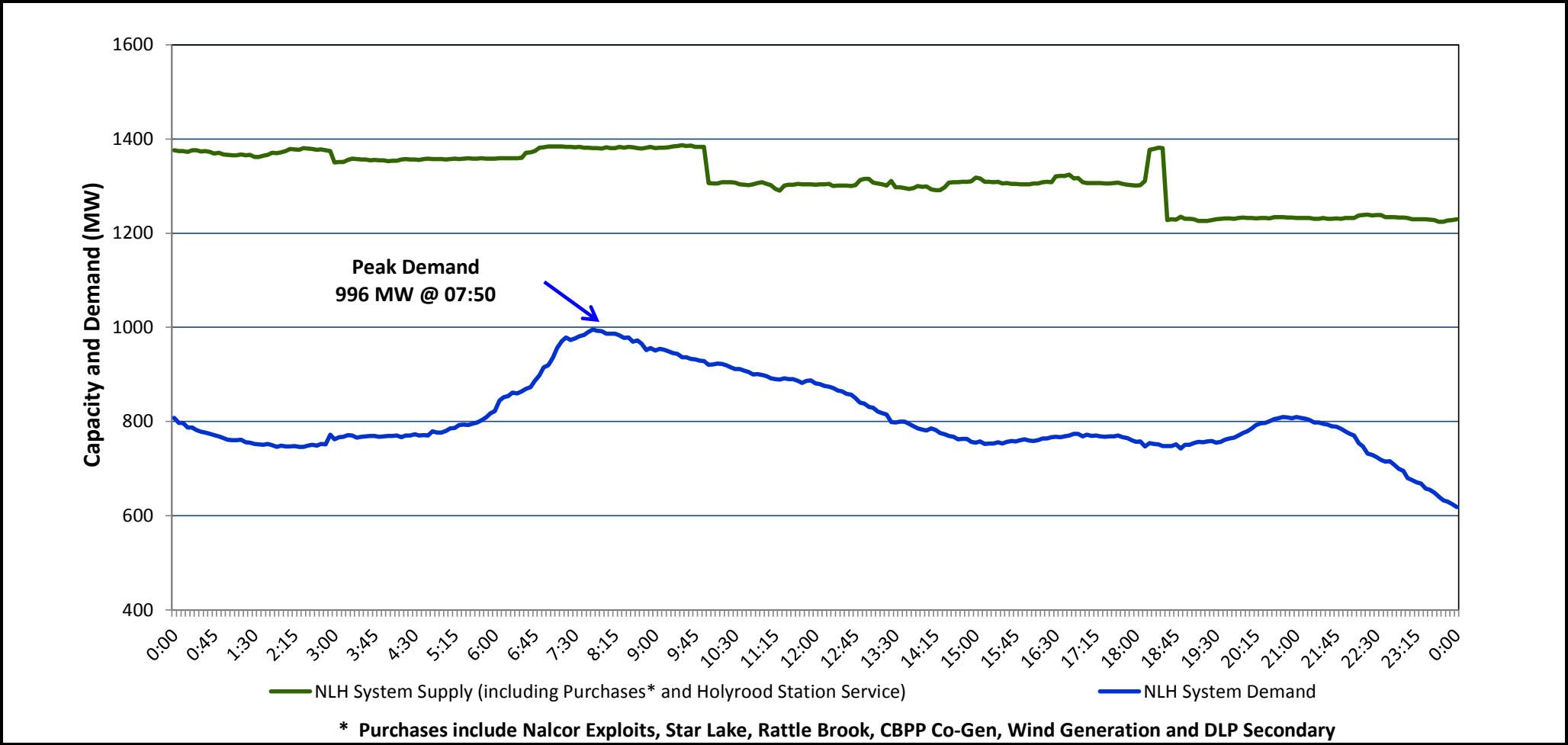


Newfoundland Labrador Hydro (NLH)
Supply and Demand Status Report Filed April 16, 2014

Section 1
NLH System Island Interconnected Supply and Demand
Actual 24 Hour System Performance For April 15, 2014



Supply Notes for April 15, 2014

→ As of 0422 hours, Feb. 17, 2014, Bay d'Espoir Unit 6 (77 MW) unavailable for service.

→ As of 0334 hours, April 10, 2014, Holyrood Unit 1 derated to 150 MW (from 170 MW).

→ As of 1717 hours, April 10, 2014, Holyrood Unit 3 removed from service for annual maintenance (150 MW).

→ As of 1055 hours, April 14, 2014, Bay d'Espoir Unit 2 removed from service for annual maintenance (77 MW).

→ At 0942 hours, Bay d'Espoir Unit 3 removed from service for maintenance (77 MW). Unit returned to service at 1812 hours.

→ At 1835 hours, Holyrood Unit 2 removed from service for maintenance (derated to 155MW from 165 MW).

Section 2
NLH System Island Interconnected Supply and Demand

April 16, 2014	NLH System Outlook ³	Five-Day Forecast	Temperature (°C)		NLH System Demand (MW)	
			Morning	Evening	Morning	Evening
Available NLH System Supply: ⁴	1,175 MW	Wednesday, April 16, 2014	9	12	900	825
Current St. John's Temperature:	11 °C	Thursday, April 17, 2014	-1	-2	1,100	1,000
Current St. John's Windchill:	N/A °C	Friday, April 18, 2014	-7	2	1,050	975
NLH System Peak Demand Forecast:	900 MW	Saturday, April 19, 2014	-4	1	1,050	1,000
		Sunday, April 20, 2014	-2	-2	1,075	950

Supply Notes for April 16, 2014³

→

Notes:

1. Generation outages for running and corrective maintenance are included. These are not unusual for power system operations. They generally do not impact customer supply. The power system operators schedule outages to system equipment whenever possible to coincide with periods when customer demands are low and sufficient supply reserves are available. However, from time to time equipment outages are necessary and reserves may be impacted.
2. Due to the Island Interconnected System being isolated from the larger North American grid, when there is a sudden loss of large generating units some customer's load must be interrupted for short periods to bring generation output equal to customer demand. This automatic action of power system protection, referred to as underfrequency load shedding, is necessary to ensure the integrity and reliability of system equipment. Underfrequency events typically occur 5 to 8 times per year on the Island Interconnected System and the resultant customer load interruptions are generally less than 30 minutes.
3. As of 0800 Hours.
4. Gross output including station service at Holyrood (24.5 MW) and improved hydraulic output due to water levels (35 MW). Includes Nalcor Exploits, Star Lake, Rattle Brook, CBPP Co-Gen. Excludes wind generation and DLP Secondary.

Section 3
Peak Demand Information
Previous Day Actual Peak and Current Day Forecast Peak

April 15, 2014	Actual NLH System Island Interconnected Peak Demand ¹	07:50	996 MW
April 16, 2014	Forecast NLH System Island Interconnected Peak Demand		900 MW
April 15, 2014	Actual Total Island Peak Demand ²	08:15	1,180 MW
April 16, 2014	Forecast Total Island Peak Demand		1,100 MW

Notes:

1. NLH System Island Interconnected is supplied by generation owned by NLH as well as NLH Power Purchases as detailed in Section 1 above.
2. Total Island System Demand is supplied by NLH generation and NLH Power Purchases, plus generation owned and operated by Newfoundland Power and Corner Brook Pulp & Paper to meet their respective supply needs.