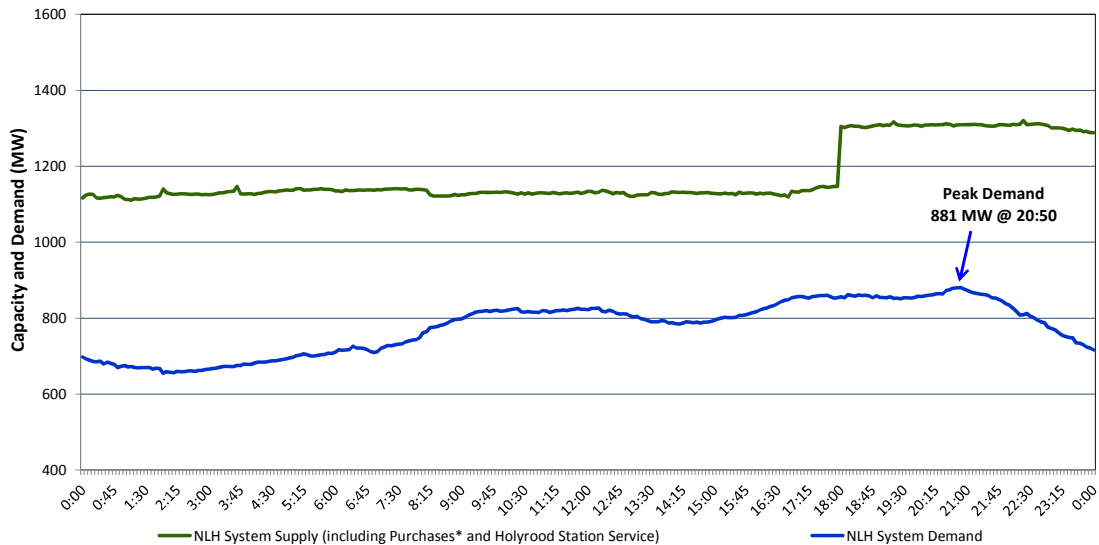


Newfoundland Labrador Hydro (NLH) Supply and Demand Status Report Filed May 12, 2014

Section 1 NLH System Island Interconnected Supply and Demand Actual 24 Hour System Performance For May 10, 2014



* Purchases include Nalcor Exploits, Star Lake, Rattle Brook, CBPP Co-Gen, Wind Generation and DLP Secondary

Supply Notes for May 10, 2014

- As of 0422 hours, Feb. 17, 2014, Bay d'Espoir Unit 6 (77 MW) unavailable for service.
- As of 1717 hours, April 10, 2014, Holyrood Unit 3 removed from service for annual maintenance (150 MW).
- As of 2028 hours, May 09, 2014, Holyrood Unit 1 removed from service for maintenance (170 MW).
- At 1906 hours, May 10, 2014, Bay d'Espoir Unit 7 returned to service (154 MW).

Section 2 NLH System Island Interconnected Supply and Demand

May 11, 2014 NLH System Outlook ³			Five-Day Forecast		Temperature (°C)		NLH System Demand (MW)	
					Morning	Evening	Morning	Evening
Available NLH System Supply: ⁴	1,105	MW	Sunday, May 11, 2014		7	1	850	950
Current St. John's Temperature:	8	°C	Monday, May 12, 2014		0	3	950	900
Current St. John's Windchill:	N/A	°C	Tuesday, May 13, 2014		-1	-1	975	975
NLH System Peak Demand Forecast:	950	MW	Wednesday, May 14, 2014		-2	2	1,000	900
			Thursday, May 15, 2014		4	12	800	750

Supply Notes for May 11, 2014²

- At 0651 hours, May 11, 2014, Bay d'Espoir Unit 7 removed from service (154 MW).

- Notes:
1. Generation outages for running and corrective maintenance are included. These are not unusual for power system operations. They generally do not impact customer supply. The power system operators schedule outages to system equipment whenever possible to coincide with periods when customer demands are low and sufficient supply reserves are available. However, from time to time equipment outages are necessary and reserves may be impacted.
 2. Due to the Island Interconnected System being isolated from the larger North American grid, when there is a sudden loss of large generating units some customer's load must be interrupted for short periods to bring generation output equal to customer demand. This automatic action of power system protection, referred to as underfrequency load shedding, is necessary to ensure the integrity and reliability of system equipment. Underfrequency events typically occur 5 to 8 times per year on the Island Interconnected System and the resultant customer load interruptions are generally less than 30 minutes.
 3. As of 0800 Hours.
 4. Gross output including station service at Holyrood (24.5 MW) and improved hydraulic output due to water levels (35 MW). Includes Nalcor Exploits, Star Lake, Rattle Brook, CBPP Co-Gen. Excludes wind generation and DLP Secondary.

Section 3 Peak Demand Information Previous Day Actual Peak and Current Day Forecast Peak

May 10, 2014	Actual NLH System Island Interconnected Peak Demand ¹	20:50	881 MW
May 11, 2014	Forecast NLH System Island Interconnected Peak Demand		950 MW
May 10, 2014	Actual Total Island Peak Demand ²	18:15	1,023 MW
May 11, 2014	Forecast Total Island Peak Demand		1,125 MW

- Notes:
1. NLH System Island Interconnected is supplied by generation owned by NLH as well as NLH Power Purchases as detailed in Section 1 above.
 2. Total Island System Demand is supplied by NLH generation and NLH Power Purchases, plus generation owned and operated by Newfoundland Power and Corner Brook Pulp & Paper to meet their respective supply needs.