

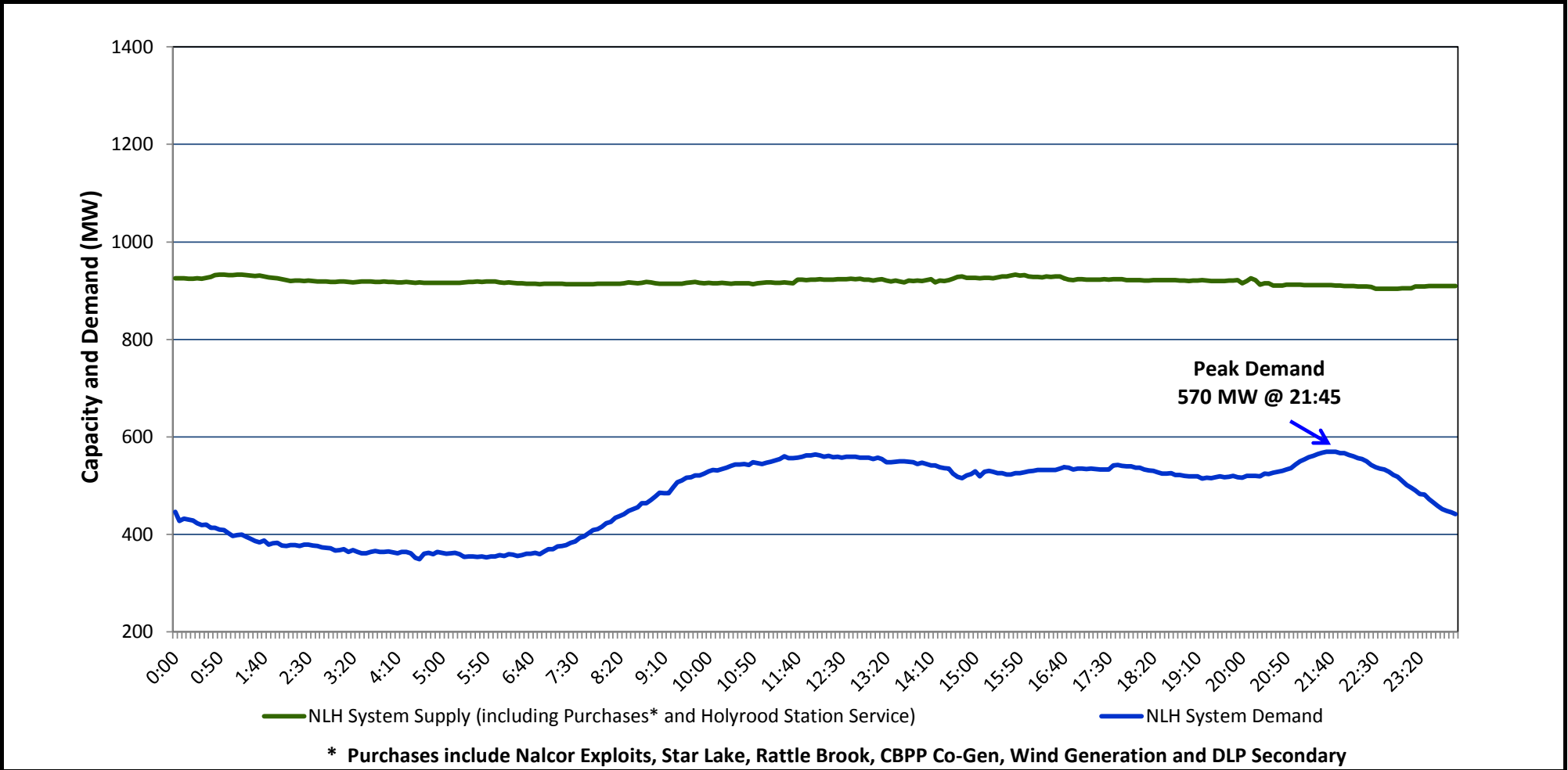
Newfoundland Labrador Hydro (NLH)

Supply and Demand Status Report Filed July 28, 2014

Section 1

NLH System Island Interconnected Supply and Demand

Actual 24 Hour System Performance For July 27, 2014



**Supply Notes for July 27, 2014**

→ As of 0422 hours, Feb. 17, 2014, Bay d'Espoir Unit 6 unavailable for service (77 MW).

→ As of 0800 hours, May 21, 2014, Holyrood Unit 2 removed from service for annual maintenance (165 MW).

→ As of 1554 hours, May 24, 2014, Bay d'Espoir Unit 3 removed from service for annual maintenance (76.5 MW).

→ As of 0858 hours, June 13, 2014, Stephenville Gas Turbine End A removed from service for annual maintenance (25 MW).

→ As of 1800 hours, July 04, 2014, Stephenville Gas Turbine End B derated to 14 MW (25 MW).

→ As of 0755 hours, July 06, 2014, Bay d'Espoir Unit 4 removed from service for annual maintenance (76.5 MW).

→ As of 1139 hours, July 09, 2014, Cat Arm Unit 1 derated to 53 MW (67 MW).

→ As of 1100 hours, July 21, 2014, Holyrood Unit 1 removed from service for annual maintenance (170 MW).

→ As of 1733 hours, July 23, 2014, Bay d'Espoir Unit 7 derated to 100 MW (154 MW).

→ As of 0347 hours, July 25, 2014, Hardwoods Gas Turbine unavailable due to a forced outage (50 MW).

Section 2								
NLH System Island Interconnected Supply and Demand								
July 28, 2014      NLH System Outlook <sup>3</sup>			Five-Day Forecast	Temperature (°C)		NLH System Demand (MW)		
				Morning	Evening	Morning	Evening	
Available NLH System Supply: <sup>4</sup>	760	MW	Monday, July 28, 2014	18	22	625	625	
Current St. John's Temperature:	19	°C	Tuesday, July 29, 2014	17	22	625	650	
Current St. John's Windchill:	N/A	°C	Wednesday, July 30, 2014	21	27	625	625	
NLH System Peak Demand Forecast:	625	MW	Thursday, July 31, 2014	19	27	625	625	
			Friday, August 01, 2014	19	25	625	600	

**Supply Notes for July 28, 2014<sup>3</sup>**

→ At 0728 hours, July 28, 2014, Holyrood Unit 3 tripped offline and is unavailable due to a forced outage (150 MW).

Notes:

- Generation outages for running and corrective maintenance are included. These are not unusual for power system operations. They generally do not impact customer supply. The power system operators schedule outages to system equipment whenever possible to coincide with periods when customer demands are low and sufficient supply reserves are available. However, from time to time equipment outages are necessary and reserves may be impacted.
- Due to the Island Interconnected System being isolated from the larger North American grid, when there is a sudden loss of large generating units some customer's load must be interrupted for short periods to bring generation output equal to customer demand. This automatic action of power system protection, referred to as underfrequency load shedding, is necessary to ensure the integrity and reliability of system equipment. Underfrequency events typically occur 5 to 8 times per year on the Island Interconnected System and the resultant customer load interruptions are generally less than 30 minutes.
- As of 0800 Hours.
- Gross output including station service at Holyrood (24.5 MW) and improved hydraulic output due to water levels (35 MW). Includes Nalcor Exploits, Star Lake, Rattle Brook, CBPP Co-Gen. Excludes wind generation and DLP Secondary.

Section 3			
Peak Demand Information			
Previous Day Actual Peak and Current Day Forecast Peak			
July 27, 2014	Actual NLH System Island Interconnected Peak Demand <sup>1</sup>	21:45	570 MW
July 28, 2014	Forecast NLH System Island Interconnected Peak Demand		625 MW
July 27, 2014	Actual Total Island Peak Demand <sup>2</sup>	12:10	703 MW
July 28, 2014	Forecast Total Island Peak Demand		725 MW
Notes: 1. NLH System Island Interconnected is supplied by generation owned by NLH as well as NLH Power Purchases as detailed in Section 1 above.			
2. Total Island System Demand is supplied by NLH generation and NLH Power Purchases, plus generation owned and operated by Newfoundland Power and Corner Brook Pulp & Paper to meet their respective supply needs.			