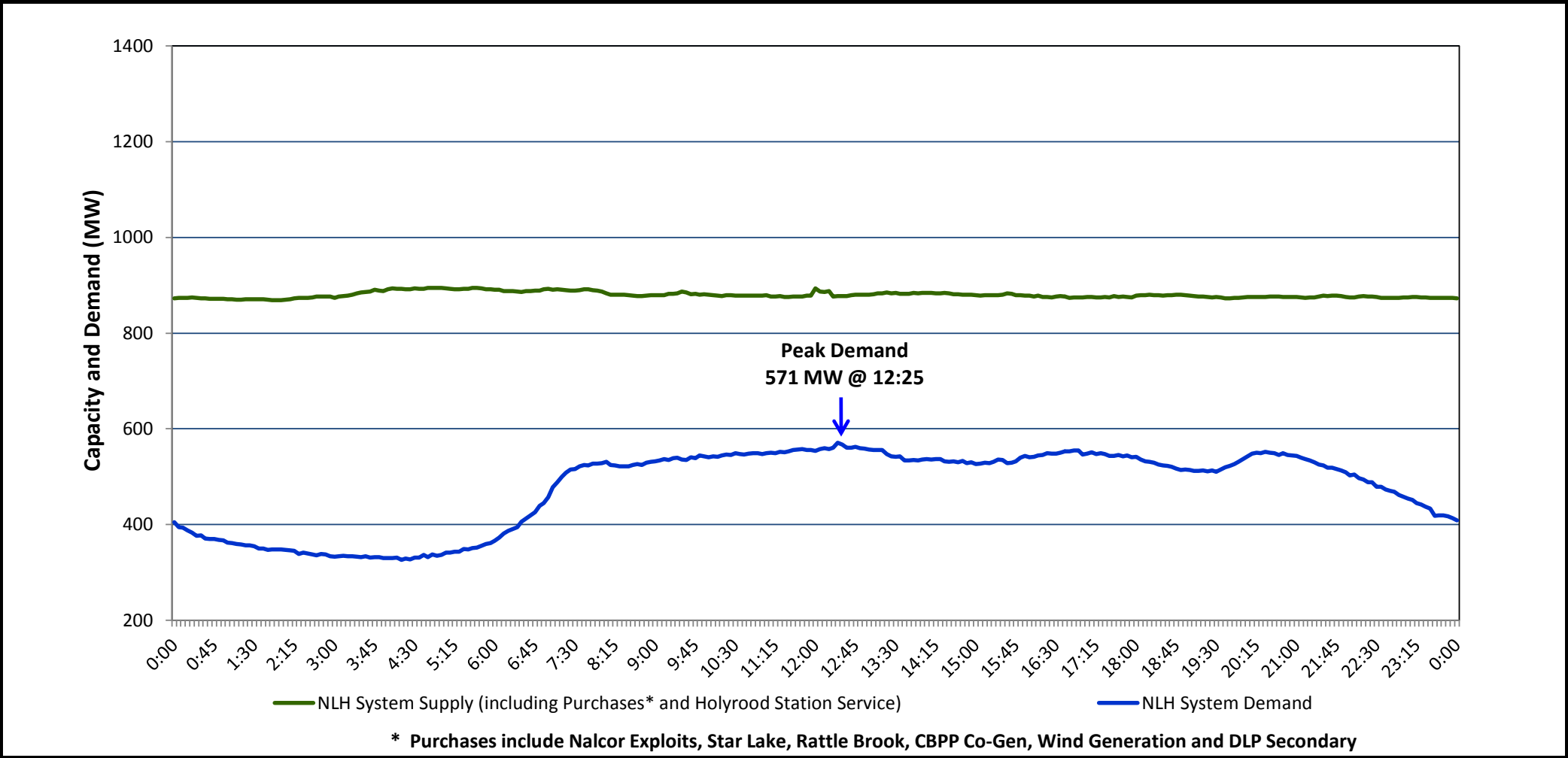


Newfoundland Labrador Hydro (NLH)
Supply and Demand Status Report Filed September 08, 2014

Section 1
NLH System Island Interconnected Supply and Demand
Actual 24 Hour System Performance For September 05, 2014



Supply Notes for September 05, 2014

→ As of 0800 hours, May 21, 2014, Holyrood Unit 2 removed from service for annual maintenance (165 MW).
→ As of 0858 hours, June 13, 2014, Stephenville Gas Turbine End A removed from service for annual maintenance (25 MW).
→ As of 1100 hours, July 21, 2014, Holyrood Unit 1 removed from service for annual maintenance (170 MW).
→ As of 0347 hours, July 25, 2014, Hardwoods Gas Turbine unavailable due to a forced outage (50 MW).
→ As of 1000 hours, August 20, 2014, HRD Unit 3 derating adjusted from 100 to 120 MW (Air heater and condenser vacuum problem) (150 MW).
→ As of 0900 hours, August 21, 2014, Bay D'Espoir Unit 7 derating adjusted from 120 to 100 MW (Vibration problem) (154 MW).
→ As of 1814 hours, August 22, 2014, Stephenville Gas Turbine End B derated to 16 MW (25 MW).
→ As of 1738 hours, August 27, 2014, Cat Arm Unit 1 derated to 53 MW (67 MW).
→ As of 0227 hours, September 01, 2014, Nalcor Grand Falls Unit 9 removed from service for annual maintenance (30 MW). Net impact to system 5 MW (the excess water utilised by other Nalcor Grand Falls Units 5 to 8).
→ As of 0923 hours, September 01, 2014, Upper Salmon Unit removed from service for annual maintenance (84 MW).
→ As of 1000 hours, September 04, 2014, Bay D'Espoir Unit 3 removed from service for a planned outage (76.5 MW).
→ As of 1000 hours, September 04, 2014, Bay D'Espoir Unit 4 removed from service for a planned outage (76.5 MW).

Section 2
NLH System Island Interconnected Supply and Demand

September 6, 2014	NLH System Outlook ³	Five-Day Forecast	Temperature (°C)		NLH System Demand (MW)	
			Morning	Evening	Morning	Evening
Available NLH System Supply: ⁴	865 MW	Saturday, September 06, 2014	9	23	575	575
Current St. John's Temperature:	16 °C	Sunday, September 07, 2014	18	17	575	600
Current St. John's Windchill:	N/A °C	Monday, September 08, 2014	12	15	625	625
NLH System Peak Demand Forecast:	575 MW	Tuesday, September 09, 2014	9	15	625	625
		Wednesday, September 10, 2014	12	13	625	625

Supply Notes for September 06, 2014³

→

Notes:

1. Generation outages for running and corrective maintenance are included. These are not unusual for power system operations. They generally do not impact customer supply. The power system operators schedule outages to system equipment whenever possible to coincide with periods when customer demands are low and sufficient supply reserves are available. However, from time to time equipment outages are necessary and reserves may be impacted.
2. Due to the Island Interconnected System being isolated from the larger North American grid, when there is a sudden loss of large generating units some customer's load must be interrupted for short periods to bring generation output equal to customer demand. This automatic action of power system protection, referred to as underfrequency load shedding, is necessary to ensure the integrity and reliability of system equipment. Underfrequency events typically occur 5 to 8 times per year on the Island Interconnected System and the resultant customer load interruptions are generally less than 30 minutes.
3. As of 0800 Hours.
4. Gross output including station service at Holyrood (24.5 MW) and improved hydraulic output due to water levels (35 MW). Includes Nalcor Exploits, Star Lake, Rattle Brook, CBPP Co-Gen. Excludes wind generation and DLP Secondary.

Section 3
Peak Demand Information
Previous Day Actual Peak and Current Day Forecast Peak

September 5, 2014	Actual NLH System Island Interconnected Peak Demand ¹	12:25	571 MW
September 6, 2014	Forecast NLH System Island Interconnected Peak Demand		575 MW
September 5, 2014	Actual Total Island Peak Demand ²	12:30	699 MW
September 6, 2014	Forecast Total Island Peak Demand		725 MW

Notes:

1. NLH System Island Interconnected is supplied by generation owned by NLH as well as NLH Power Purchases as detailed in Section 1 above.
2. Total Island System Demand is supplied by NLH generation and NLH Power Purchases, plus generation owned and operated by Newfoundland Power and Corner Brook Pulp & Paper to meet their respective supply needs.