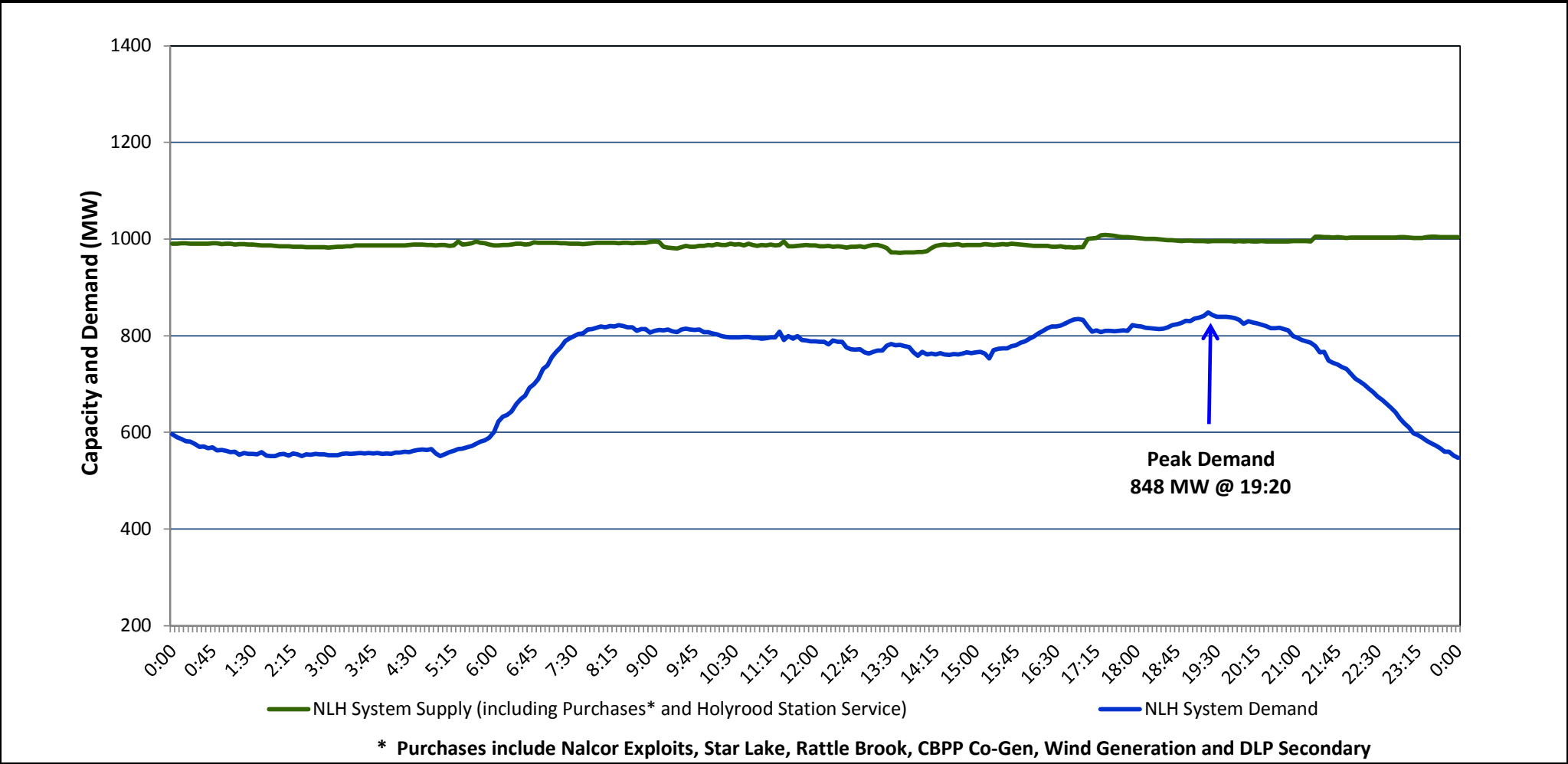


Newfoundland Labrador Hydro (NLH)  
Supply and Demand Status Report Filed October 01, 2014

Section 1  
NLH System Island Interconnected Supply and Demand  
Actual 24 Hour System Performance For September 30, 2014



**Supply Notes for September 30, 2014**

→ As of 0858 hours, June 13, 2014, Stephenville Gas Turbine End A removed from service for annual maintenance (25 MW).

→ As of 1100 hours, July 21, 2014, Holyrood Unit 1 removed from service for annual maintenance (170 MW).

→ As of 1738 hours, August 27, 2014, Cat Arm Unit 1 derated to 53 MW (67 MW).

→ As of 1216 hours, September 14, 2014, Bay d'Espoir Unit 7 removed from service for annual maintenance, derated to 100 MW (154 MW).

→ As of 1520 hours, September 19, 2014, Stephenville Gas Turbine End B derated to 18 MW (25 MW).

→ As of 1812 hours, September 21, 2014, Holyrood Unit 2 removed from service for planned maintenance, (170 MW but previously derated to 110 MW).

→ As of 1653 hours, September 25, 2014, Bay d'Espoir Unit 3 removed from service on a forced outage (76.5 MW).

→ At 0908 hours, September 30, 2014, Star Lake Unit removed from service for maintenance. Unit returned to service at 2116 hours (18 MW).

→ At 1734 hours, September 30, 2014, Holyrood Unit 3 load tested to 135 MW (150 MW).

Section 2								
NLH System Island Interconnected Supply and Demand								
October 1, 2014	NLH System Outlook <sup>3</sup>			Five-Day Forecast	Temperature (°C)		NLH System Demand (MW)	
					Morning	Evening	Morning	Evening
Available NLH System Supply: <sup>4</sup>	1,000	MW		Wednesday, October 01, 2014	9	8	750	750
Current St. John's Temperature:	9	°C		Thursday, October 02, 2014	2	5	800	800
Current St. John's Windchill:	N/A	°C		Friday, October 03, 2014	6	9	750	675
NLH System Peak Demand Forecast:	750	MW		Saturday, October 04, 2014	11	15	650	650
				Sunday, October 05, 2014	13	16	675	675

**Supply Notes for October 01, 2014<sup>3</sup>**

→

Notes:

1. Generation outages for running and corrective maintenance are included. These are not unusual for power system operations. They generally do not impact customer supply. The power system operators schedule outages to system equipment whenever possible to coincide with periods when customer demands are low and sufficient supply reserves are available. However, from time to time equipment outages are necessary and reserves may be impacted.
2. Due to the Island Interconnected System being isolated from the larger North American grid, when there is a sudden loss of large generating units some customer's load must be interrupted for short periods to bring generation output equal to customer demand. This automatic action of power system protection, referred to as underfrequency load shedding, is necessary to ensure the integrity and reliability of system equipment. Underfrequency events typically occur 5 to 8 times per year on the Island Interconnected System and the resultant customer load interruptions are generally less than 30 minutes.
3. As of 0800 Hours.
4. Gross output including station service at Holyrood (24.5 MW) and improved hydraulic output due to water levels (35 MW). Includes Nalcor Exploits, Star Lake, Rattle Brook, CBPP Co-Gen. Excludes wind generation and DLP Secondary.

Section 3 Peak Demand Information Previous Day Actual Peak and Current Day Forecast Peak			
September 30, 2014	Actual NLH System Island Interconnected Peak Demand <sup>1</sup>	19:20	848 MW
October 1, 2014	Forecast NLH System Island Interconnected Peak Demand		750 MW
September 30, 2014	Actual Total Island Peak Demand <sup>2</sup>	19:05	928 MW
October 1, 2014	Forecast Total Island Peak Demand		875 MW
Notes: 1. NLH System Island Interconnected is supplied by generation owned by NLH as well as NLH Power Purchases as detailed in Section 1 above. 2. Total Island System Demand is supplied by NLH generation and NLH Power Purchases, plus generation owned and operated by Newfoundland Power and Corner Brook Pulp & Paper to meet their respective supply needs.			