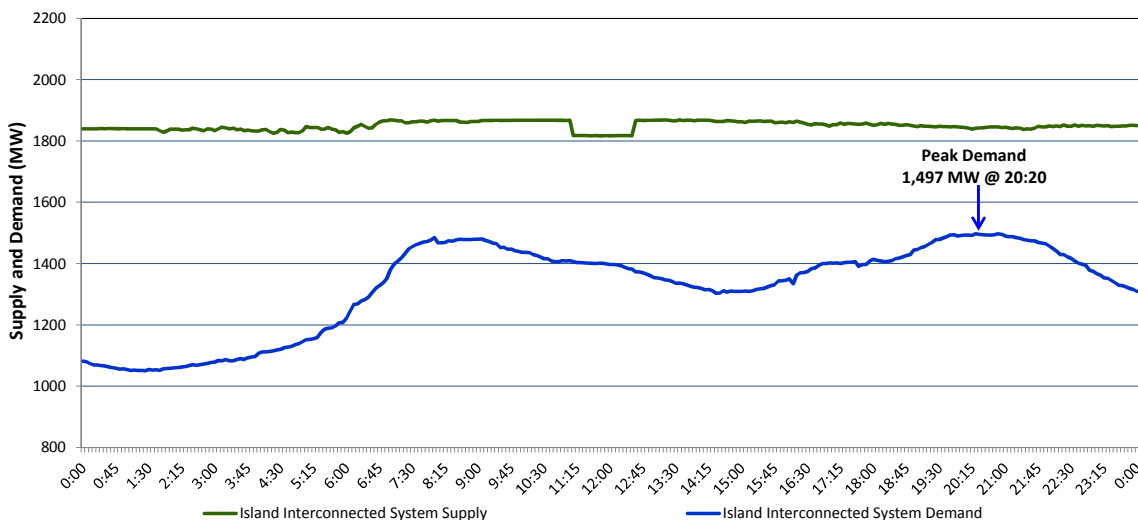


## Newfoundland Labrador Hydro (NLH) Supply and Demand Status Report Filed Friday, March 13, 2015

### Section 1 Island Interconnected System Supply and Demand Actual 24 Hour System Performance For Thursday, March 12, 2015



#### Supply Notes For March 12, 2015

A As of 1823 hours, March 01, 2015, Hardwoods Gas Turbine End B unavailable (25 MW).

B As of 2324 hours, March 11, 2015, Holyrood Unit 1 removed from service (170 MW).

C At 1109 hours, March 12, 2015, Stephenville Gas Turbine tripped while in synchronous condenser operation (50 MW).

D At 1229 hours, March 12, 2015, Stephenville Gas Turbine returned to service (50 MW).

### Section 2 Island Interconnected Supply and Demand

Fri, Mar 13, 2015 Island System Outlook <sup>3</sup>			Seven-Day Forecast		Temperature (°C)		Island System Daily Peak Demand (MW)	
					Morning	Evening	Forecast	Adjusted <sup>b</sup>
Available Island System Supply: <sup>5</sup>	2,035	MW	Friday, March 13, 2015		-12	-15	1,645	1,545
NLH Generation: <sup>4</sup>	1,670	MW	Saturday, March 14, 2015		-14	-12	1,570	1,470
NLH Power Purchases:	150	MW	Sunday, March 15, 2015		-13	-9	1,505	1,405
Other Island Generation:	215	MW	Monday, March 16, 2015		-4	-2	1,525	1,425
Current St. John's Temperature:	-13	°C	Tuesday, March 17, 2015		-1	-2	1,390	1,295
Current St. John's Windchill:	-24	°C	Wednesday, March 18, 2015		-3	-1	1,400	1,305
7-Day Island Peak Demand Forecast:	1,645	MW	Thursday, March 19, 2015		-2	-5	1,340	1,245

#### Supply Notes For March 13, 2015

E At 0033 hours, March 13, 2015, Holyrood Unit 1 returned to service (170 MW).

- Notes:
1. Generation outages for running and corrective maintenance are included. These are not unusual for power system operations. They generally do not impact customer supply. The power system operators schedule outages to system equipment whenever possible to coincide with periods when customer demands are low and sufficient supply reserves are available. However, from time to time equipment outages are necessary and reserves may be impacted.
  2. Due to the Island Interconnected System being isolated from the larger North American grid, when there is a sudden loss of large generating units some customer's load must be interrupted for short periods to bring generation output equal to customer demand. This automatic action of power system protection, referred to as underfrequency load shedding, is necessary to ensure the integrity and reliability of system equipment. Underfrequency events typically occur 5 to 8 times per year on the Island Interconnected System and the resultant customer load interruptions are generally less than 30 minutes.
  3. As of 0800 Hours.
  4. Gross output including station service at Holyrood (24.5 MW) and improved NLH hydraulic output due to water levels (35 MW).
  5. Gross output from all Island sources (including Note 4).
  6. Adjusted for CBP&P interruptible load (when applicable) and the impact of voltage reduction.

### Section 3 Island Peak Demand Information Previous Day Actual Peak and Current Day Forecast Peak

Thu, Mar 12, 2015	Actual Island Peak Demand <sup>7</sup>	20:20	1,497 MW
Fri, Mar 13, 2015	Forecast Island Peak Demand		1,645 MW

Notes: 7. Island Demand is supplied by NLH generation and purchases, plus generation owned and operated by Newfoundland Power and Corner Brook Pulp & Paper (Deer Lake Power, DLP).