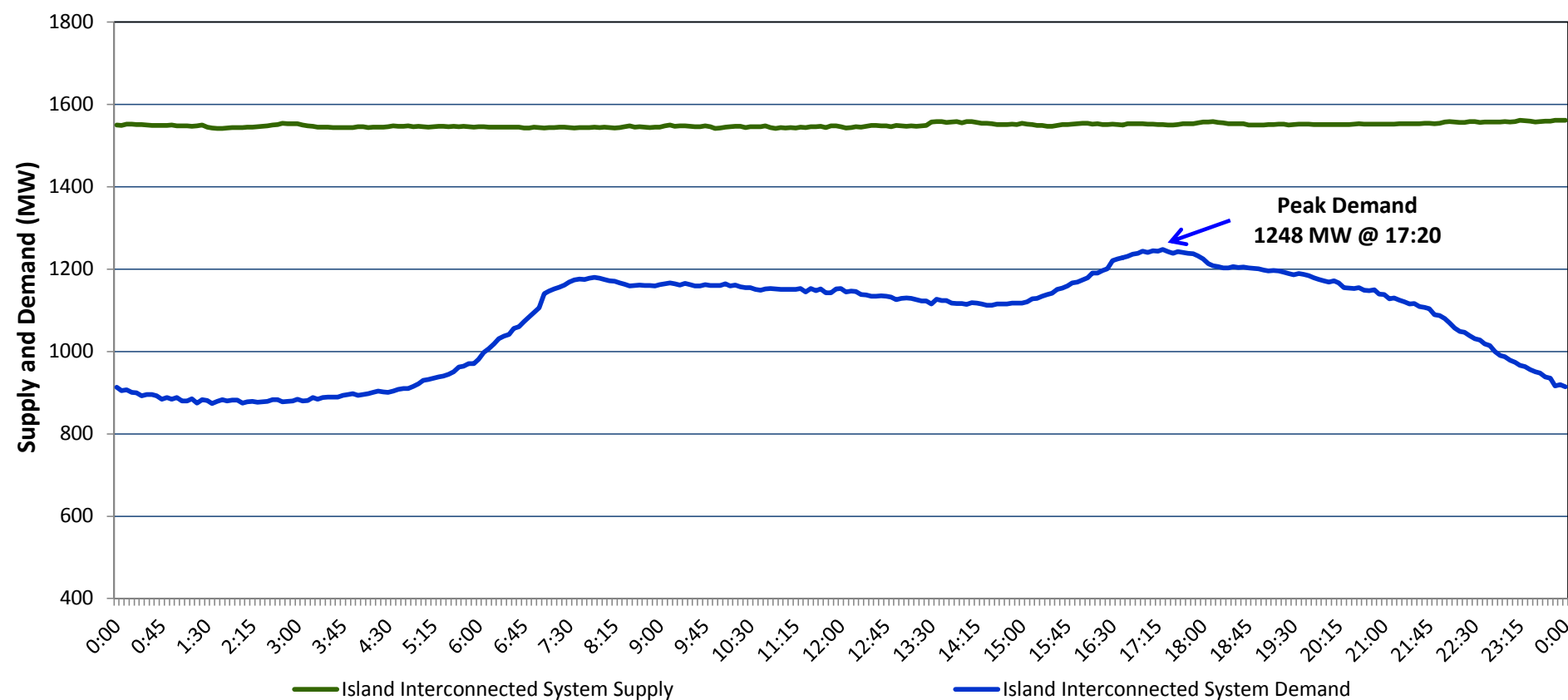


Newfoundland Labrador Hydro (NLH)
Supply and Demand Status Report Filed Thursday, November 05, 2015

Section 1
Island Interconnected System Supply and Demand
Actual 24 Hour System Performance For Wednesday, November 04, 2015



Supply Notes For November 04, 2015 ^{1,2}

A As of 0949 hours, August 01, 2015, Holyrood Unit 1 removed from service for annual maintenance (170 MW).

B As of 1042 hours, August 31, 2015, Stephenville Gas Turbine unavailable. Previously derated to 30 MW (50 MW).

C As of 1605 hours, September 27, 2015, Bay d'Espoir Unit 4 unavailable (76.5 MW).

D As of 1650 hours, October 26, 2015, Hinds Lake Unit unavailable (75 MW).

E As of 1825 hours, October 26, 2015, Nalcor Exploits Grand Falls Units 5-8 unavailable. No net impact to the Island Interconnected System.

F As of 0911 hours, November 01, 2015, Cat Arm Unit 1 unavailable (67 MW).

G At 1327 hours, November 04, 2015, Hardwoods Gas Turbine derated to 38MW (50MW). End A 25MW, End B 19MW.

Section 2
Island Interconnected Supply and Demand

Thu, Nov 05, 2015	Island System Outlook ³	Seven-Day Forecast	Temperature (°C)		Island System Daily Peak Demand (MW) Forecast
			Morning	Evening	
Available Island System Supply: ⁵	1,545 MW	Thursday, November 05, 2015	2	0	1,360
NLH Generation: ⁴	1,245 MW	Friday, November 06, 2015	2	3	1,235
NLH Power Purchases:	95 MW	Saturday, November 07, 2015	11	8	1,010
Other Island Generation:	205 MW	Sunday, November 08, 2015	5	3	1,205
Current St. John's Temperature:	0 °C	Monday, November 09, 2015	1	1	1,225
Current St. John's Windchill:	N/A °C	Tuesday, November 10, 2015	4	5	1,130
7-Day Island Peak Demand Forecast:	1,360 MW	Wednesday, November 11, 2015	4	2	1,130

Supply Notes For November 05, 2015 ³

Notes:

1. Generation outages for running and corrective maintenance are included. These are not unusual for power system operations. They generally do not impact customer supply. The power system operators schedule outages to system equipment whenever possible to coincide with periods when customer demands are low and sufficient supply reserves are available. However, from time to time equipment outages are necessary and reserves may be impacted.
2. Due to the Island Interconnected System being isolated from the larger North American grid, when there is a sudden loss of large generating units some customer's load must be interrupted for short periods to bring generation output equal to customer demand. This automatic action of power system protection, referred to as underfrequency load shedding, is necessary to ensure the integrity and reliability of system equipment. Underfrequency events typically occur 5 to 8 times per year on the Island Interconnected System and the resultant customer load interruptions are generally less than 30 minutes.
3. As of 0800 Hours.
4. Gross output including station service at Holyrood (24.5 MW) and improved NLH hydraulic output due to water levels (35 MW).
5. Gross output from all Island sources (including Note 4).

Section 3
Island Peak Demand Information
Previous Day Actual Peak and Current Day Forecast Peak

Wed, Nov 04, 2015	Actual Island Peak Demand ⁷	17:20	1,248 MW
Thu, Nov 05, 2015	Forecast Island Peak Demand		1,360 MW

Notes: 7. Island Demand is supplied by NLH generation and purchases, plus generation owned and operated by Newfoundland Power and Corner Brook Pulp & Paper (Deer Lake Power, DLP).